

2011 Annual Report

A Year of Milestones, Accomplishments and Stories!



The Marine
Mammal Center.







Contents

- 4** Our Mission
- 5** Recognizing the Milestones, Accomplishments and Stories of 2011
- 6** The Year in Numbers
- 7** Ocean Stewardship Stories—
Inspiring Marine Mammal Conservation
- 9** Veterinary Accomplishments—
Training the Next Generation of Veterinary Scientists
- 10** Science and Medical Milestones—
Advancing Knowledge About Marine Mammal Health
- 12** Education Milestones—
Teaching the Ocean Stewards of Tomorrow, Today
- 13** Conservation Story—
Hawaiian Monk Seal Primary Care Hospital
- 15** Corporate Partners Accomplishments—
Supporting Education Through Generous Gifts and Connections
- 16** Our Donors
- 23** Financial Summary
- 24** Board of Directors and Scientific Advisors



Our mission: To expand knowledge about marine mammals—their health and that of their ocean environment—and inspire their global conservation.

Our Work

Our core work is the **rescue and rehabilitation** of sick and injured marine mammals, supported by state-of-the-art animal care and research facilities, a corps of dedicated volunteers, and an engaged community.

We partner with leading scientists and other professionals to learn from the patients in our care—patients from healthy, endangered and at-risk populations—and **expand and advance scientific knowledge**, thus enhancing understanding of the health of our oceans and highlighting implications for human health.

We **disseminate knowledge** to members of the scientific community and general public. We ultimately inspire action and foster stewardship towards the care of our environment.

Our Values

At all times we are guided by the following values:

- Respect for the innate importance of each animal in our care.
- Respect for the environment in which our patients live, and that we share.
- A commitment to uphold the highest standards of animal care and welfare.
- A rigorous pursuit of science, and a commitment to scientific integrity.
- Appreciation for the invaluable contributions of our volunteers, without whom we could not exist.
- Recognition that all members of our community—volunteers, donors, staff and directors—are essential to the pursuit and success of our mission and deserve our respect.
- A pursuit of our mission that encourages innovation, collaboration and teamwork.



The Marine
Mammal Center®

2000 Bunker Road, Fort Cronkhite, Sausalito, CA 94965
415.289.7325 (SEAL) MarineMammalCenter.org

Recognizing the Milestones, Accomplishments and Stories of 2011



Any accomplishment of the Center is a tribute to our hard-working and passionate corps of volunteers and staff, and to our many individual, corporate and foundation supporters. But each accomplishment begins with our patients, and one patient in particular highlights how 2011 was a truly extraordinary year.

In July, our volunteers rescued a California sea lion near the famous Santa Cruz Beach Boardwalk. That sea lion, who came to be known as **Milestone**, had been behaving listlessly, allowing people to come too close. On site, our veterinarians quickly confirmed a diagnosis of leptospirosis (a bacterial infection that causes damage to the kidneys). Milestone was quite ill, but with antibiotics and the great care of the Center's team, he recovered, and eventually returned to the ocean. What set this sea lion apart was not his malady (sadly, we see many patients afflicted with this disease) but that he was **the Center's 10,000th sea lion patient** since we began operations in 1975!

Every one of our patients is important to us; many suffer from infections just as Milestone did, many others suffer from ocean-borne toxins, some from cancer, and still others are found entangled in marine debris. Milestone's arrival at the hospital gave us the opportunity to pause and reflect on the extraordinary number of animals whose lives we've saved, and in turn, the magical impact they have had on each of us.

Many months have passed since we first heard a professional percussionist "play" the plastic and glass bottle sea star in the Center courtyard, and since we shared a podium with the ever-charismatic Henry, the big plastic fish. During the summer and fall of 2011, our Sausalito facility was virtually awash in plastic trash that was transformed into magnificent sea creatures as part of **Washed Ashore: Plastics, Sea Life and Art**. On display were representations of whale bones, a coral reef, and even a turtle—all made from multi-colored plastic collected from beaches. This exhibit took the devastating problem of marine debris and made it poignantly evident to tens-of-thousands of people. We, and our guests, are all now better informed, and we're certainly more motivated to help address this global issue. There's not another location where this art would display with such resonance as The Marine Mammal Center, against the backdrop of our marine mammal patients.

In April, the Center's senior scientist, **Dr. Frances Gulland**, was sworn in as a commissioner of the three-person U.S. Marine Mammal Commission. This was a remarkable occasion, and offered a great opportunity for us to recognize the accomplishments of Dr. Gulland; for the Center, for the field of marine mammal science, and for the patients we treat. In this new role, Dr. Gulland is well-positioned to influence and guide the oversight of our nation's care for marine mammals and their habitats. This was, indeed, an extraordinary appointment, befitting an extraordinary individual.

Countless other milestones and accomplishments, large and small, were a part of 2011, and we invite you to read about them in this report. While our patients are our focus, our impact is made by remarkable individuals, including our donors, volunteers and staff. The Marine Mammal Center continues to thrive as an organization because of the many individuals who comprise it, and we owe to each of you a debt of gratitude.

Karen Johnson-McKewan
Chair

Dr. Jeff Boehm
Executive Director

The Year in Numbers

2011 was a milestone year for The Marine Mammal Center. This sea lion patient, appropriately named Milestone because he was the 10,000th sea lion rescued by the Center since 1975, was treated and released back to the wild.



Animal Admits:

California sea lions: **354**
Elephant seals: **92**
Harbor seals: **64**
Cetaceans: **18**
Sea otters: **8**
Guadalupe fur seals: **5**
Northern fur seals: **3**
Non-TMMC accession: **1**
Total: **545**

Rescues by County:

North of Santa Cruz: **183**
Monterey and Santa Cruz: **229**
San Luis Obispo: **133**

Rescues Due to Human Interaction:

Harassed/unauthorized pick up: **36**
Oil/tar: **26**
Admitted because of ocean trash (fish hooks, netting, fishing line, other): **14**
Gunshot: **10**
Car or boat strike: **6**

Patients Released Back into the Wild: 249

Marine Mammal Medical Conditions (Outside of Malnutrition and Shark Bites):

Leptospirosis: **186**
Domoic acid toxicity diagnosed: **55**
Cancer found: **15**

Visitors and Education:

Visitors to the Center's hospital in Sausalito: **98,322**
Kids and adults in school programs/tours/events for members/community fairs: **45,863**
Participants served by the Whale Bus outreach to schools: **10,598**

Science Publications: 22

To view science publications, click the underlined text above

Other Numbers at a Glance:

Volunteer hours: **113,769**
Pounds of herring consumed by patients: **65,000**
Rescue calls answered: **2,630**
Gallons of salmon oil consumed by patients: **125**

Ocean Stewardship Stories— Inspiring Marine Mammal Conservation

Through stories about preventable human-caused dangers that harm marine mammals, and education about the connections we all share with the oceans, we are able to move people to action.



Blinded, Gunshot Wounded Sea Lion Survives

There is nothing more heartbreaking to see than an animal in pain, and certainly nothing more horrific than knowing that a human caused it. Such was the case in the final days of 2010 when our staff rescued an adult male California sea lion that was found with gunshot wounds to his head causing him to be blind in both eyes. Silent Knight, as he was named, was cared for by staff and volunteers for many months in 2011. Due to the extent of those injuries, he was not releasable back to the wild, but veterinarians determined that he could have a productive life if he received the right long-term care. The San Francisco Zoo came to the rescue and in May, both Silent Knight and his new buddy (another blind sea lion named Henry) made their public debuts at the Zoo's newly renovated sea lion exhibit. Silent Knight now serves as an educational ambassador to thousands of visitors each year; he is a symbol of how our own actions, either directly or indirectly, affect marine mammals.



Silent Knight and Henry in a training session at the San Francisco Zoo

Helping Animals in the Wild Using New Techniques

Every year, thousands of marine mammals become entangled in or die from ocean trash. On November 10, a large 700 lb. elephant seal was spotted at Piedras Blancas near San Simeon, CA with a green packing strap wrapped tightly around his neck. Many entangled animals are initially strong enough to escape rescue attempts and because they continue to grow, their entanglements become even tighter. Green Tie was rescued thanks to the Center's efforts to try something not done before—sedating a large and very mobile elephant seal in the wild. Once the sedative took effect, the team cut away Green Tie's entanglement and cleaned the wound. He went back to the ocean that same day. In 2011, we rescued 14 marine mammals with entanglements like Green Tie's and through those stories we're able to remind the public to keep the oceans free of trash. As a happy side note, a week after Green Tie was freed, he was spotted on another beach with other elephant seals doing what they do best—lounging!



Like Green Tie, this elephant seal was also rescued with a packing strap embedded deeply into his neck.



Angela Haseltine Pozzi, lead artist and educator for the *Washed Ashore* project, shows visitors her sculpture called “Henry the Fish” which is made entirely of brightly colored plastic trash collected from beaches in Oregon.

Washed Ashore: Plastics, Sea Life and Art

One of the milestones we achieved in 2011 was bringing to life the real problem of ocean trash and telling that story in the context of our hospital setting, where dozens of marine mammals are treated for entanglements and ingestion of plastic trash each year. Through the vision of artist and educator Angela Haseltine Pozzi, [Washed Ashore: Plastics, Sea Life and Art](#) made its California debut right here at our hospital. Between June 25 – October 15, more than 27,000 visitors to our Sausalito facility were mesmerized by what was the first-ever ocean trash art installation produced and displayed at The Marine Mammal Center. This community art project turned the ugly reality of ocean trash into 15 beautiful and massive marine life sculptures that conveyed a powerful message, inspiring all of us to re-think our use of plastics and change our lax trash disposal habits. During the exhibit period, we held ocean trash art workshops, special events and lectures, and adapted our docent-led tours—a popular way to explore the Center—to incorporate the sculptures by tying many of them to real-life medical cases at the hospital. We also produced a successful multi-media communications campaign that furthered the conservation message.



2011 WASHED ASHORE SPONSORS

If you recognize an error or omission in this list, please accept our sincerest apologies and contact our Development Department at 415.289.7335.

Title Sponsors

Charles Lamar Family Foundation
PG&E
San Francisco Magazine
Wells Fargo

Event Sponsors

The Biz & Livia Stone Foundation
Cavallo Point
Marin Sanitary
Method
Susan Grau
Whole Foods Market
Beth Sullivan

Community Sponsors

Bank of Marin
Convio
Matson Navigation Company

In-Kind Sponsors

7x7 Magazine
Aviously Delicious Catering
Barlovento Chocolates
Bay Nature Magazine
Big 4 Rentals
CamelBak
Casa Madrona Hotel & Spa
Cibo
Cold Stone Creamery
Crystal Geyser
Monica DuClaud
Econscious
Frantoio
Kate's Blossoms
Kitti's Place
Larkspur Hotel
Marin Independent Journal
Mary P. Maurer
Rustic Bakery
Small Shed Flatbreads
Saint Benoit Yogurt
Starbucks Coffee Company
TerraCycle
The Hess Collection
Tom & Dave's Specialty Coffee

Special Thanks to:

Swirl: an integrated marketing agency for developing the advertising campaign for the *Washed Ashore* exhibit

Double Forte: a public relations & marketing services firm for media relations counsel

Veterinary Accomplishments— Training the Next Generation of Veterinary Scientists



All too often we see California sea lions in need of help as a result of multiple ailments. Each patient gives us an opportunity to learn more about marine mammal health and to develop new clinical techniques to help them.

Such was the case for a yearling sea lion we called Jetty, who was found with a dangerous entanglement wrapped around her neck! Thanks to a member of the public who offered up a kayak, our rescuers were able to float up to the sea lion and perform a rescue. At our hospital, the entanglement was removed and Jetty received antibiotics. She also had another condition, [leptospirosis](#), a bacterial infection that can damage the kidneys. In 2011, our veterinarians treated 186 cases of this disease—a huge spike compared to the 37 cases in the previous year. Studying patients like Jetty also gives researchers, such as UCLA post-doctoral researcher Dr. Katie Prager, a rare opportunity to further our knowledge of this increasingly prevalent disease. In 2011, Dr. Prager worked alongside our veterinarians to investigate how leptospire are shed and transmitted in wild sea lions.

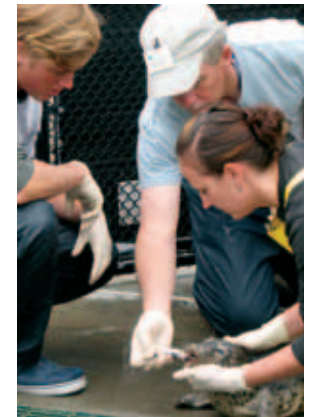
While Jetty was successfully treated for her infection and released back into the wild, what makes her story so interesting is the many opportunities she provided not only to help other marine mammals in the future, but also to educate people at the Center. Several veterinary students, who would not otherwise have had the chance to learn first-hand about the anatomy and physiology of sea lions, participated in her initial examination, anesthesia procedure (necessary in this case to quickly and painlessly remove the entanglement), and follow-up wound care.

Jetty's recuperation period also provided us with yet another learning opportunity: to help evaluate a new de-worming medication normally used for house pets. In evaluating its effectiveness on Jetty (the medicine is simply squirted onto the back of the animal) researchers will get a better understanding of whether a broader application is practical out in the field. For instance, field biologists could treat dozing Hawaiian monk seals with the medication without ever disturbing this critically endangered species. Read about our work to build [a dedicated hospital for Hawaiian monk seals](#) in this report.



Jetty's rescue and rehabilitation

Volunteer harbor seal crew supervisor, Stan Jensen (middle), teaches volunteers Jeop van Belkom, from the Netherlands, and Kimberly Swan, from New Zealand, the proper way to feed a young harbor seal. In 2011, we taught marine mammal medicine to 17 veterinary students, 7 veterinary residents and 9 visiting veterinarians from a total of 7 countries.

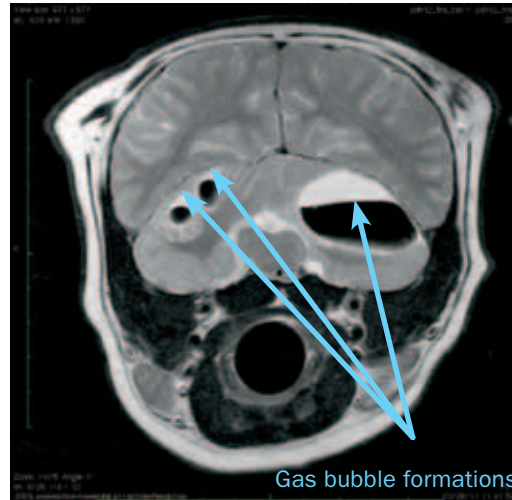


Science and Medical Milestones— Advancing Knowledge About Marine Mammal Health

In 2011, we got another glimpse of sea lion health as seen through a “bubble.”

In October, our San Luis Obispo-based volunteers rescued a young California sea lion that had stranded on Morro Rock in Morro Bay, CA. At the hospital, animal care volunteers and veterinary staff noticed something peculiar about him; he wobbled as he walked on land! During examinations, veterinarians noticed that [Sarow](#), as he was named, had a pellet in his head as a result of a gunshot. Furthermore, they noticed that gas bubbles had formed in his brain, similar in nature to a former sea lion patient named Cha Cha that the Center rescued in 2009. This is only the second time this medical oddity has been documented in a pinniped and there are many unanswered questions as to why this occurs. Marine mammals can dive to deep depths in the ocean; a series of physiological adaptations allows them to tolerate the effects of extreme pressure to avoid becoming sick when they resurface. The bubbles in Sarow’s head prevent him from performing this normal diving activity. Was the gunshot wound responsible for causing the bubbles in his brain? While answers to this question are still being sought, Sarow’s case is significant to the Center’s ongoing work in studying and documenting new marine mammal health conditions.

Sarow looks around in one of the Center’s medical pens.



Marine Mammal Scientific Milestones in 2011:

- [Evidence of gas bubble disease](#) in a live California sea lion—we described the first known case of an injury caused by gas bubble formation in a living pinniped. This is an important step towards understanding pressure induced injuries in marine mammals.
- [Methicillin-resistant Staphylococcus aureus \(MRSA\)](#) in a harbor seal—our finding of MRSA in a harbor seal at our hospital highlights the potential for marine mammals in coastal waters to acquire a bacterial infection typically associated with humans, and also the potential for human caregivers to transmit disease to the animals in their care.
- [Hawaiian monk seal conservation](#)—we evaluated the effectiveness of, and challenges involved in, captive care and rehabilitation of the critically endangered Hawaiian monk seal.

To view each science publication, click the underlined text.

Medical Milestone: First Known Hernia Surgery Performed on an Elephant Seal!

Marine mammals experience many of the same medical conditions as their human counterparts. In April, our Monterey-based volunteers rescued a young and very malnourished elephant seal on a beach. At the hospital [Wildoctic](#) really baffled our veterinarians as she couldn't keep her meals down and even after weeks on site, she just couldn't gain weight. The veterinary team investigated further and learned that the seal had an abdominal abnormality—a sliding hiatal hernia. As in humans, a hernia occurs when a body part pushes into an area where it doesn't belong; in this case, the stomach had slid into Wildoctic's chest cavity through an opening (hiatus) in her diaphragm. Similar to human patients with this condition, Wildoctic underwent a procedure called laparoscopic gastropexy. Hours after our veterinarians completed the surgery, she was back in her pen with a whole new zest for eating fish again! She stayed with us for another 20 days, gaining 44 lbs before she was released back into the ocean in June!



Wildoctic after hernia surgery



Conservation Milestone: Dr. Frances Gulland Becomes a Commissioner for the Marine Mammal Commission

In November, 2010, we were thrilled to hear the news of President Obama's nomination of our senior scientist Dr. Frances Gulland to serve as one of three commissioners on the Marine Mammal Commission with a focus on the protection and conservation of marine mammals.

On April 29, 2011, with the wind-swept Golden Gate Bridge as a backdrop, Dr. Gulland was flanked on one side by her husband, friends and colleagues at the Center, and on the other, GGNRA Superintendent Frank Dean, who read the oath for her to recite.

Dr. Gulland previously served on the commission in an advisory role and will continue to bring a wealth of experience and wisdom to the post.

Watch [Dr. Gulland's testimony](#) to the U.S. Senate's Commerce, Science and Transportation Committee on March 10, 2011 (she appears at approx. 59:30).

Education Milestones— Teaching the Ocean Stewards of Tomorrow, Today

While The Marine Mammal Center treats an animal's injuries, we cannot treat the causes for their problems without educating the next generation of ocean stewards.

Each year our education programs teach thousands of school-aged children about stewardship. While some schools can visit the Center, many others cannot afford the travel costs, so the [Whale Bus](#) outreach van comes to their rescue! Teachers love the seven unique programs that travel in a van packed with interesting, hands-on items like whale baleen, sperm whale teeth, sea lion fur and fun activities that are taught by our educators. In 2011, we launched a new program called [Ocean Ambassadors](#), which teaches students how trash travels through watersheds to the ocean and provides them with specific ideas for reducing their trash footprint. This new program has been well received by students and teachers.



AmeriCorps Interns

Since 2009, the Center's education team has benefited from the energy and enthusiasm of AmeriCorps interns. In 2011, through a partnership with Conservation Corps North Bay, three interns joined us between October and August. During the year, they taught 38% of all our school programs and tours and of that, taught 70% of our Whale Bus programs.



New Vet Detectives Experience Makes Marine Science Fun

We continue to find ways to make marine science fun, interesting and relevant for all students. In 2011, we launched [Vet Detectives](#)—an interactive tour of our hospital—that gives high school and college-aged students a hands-on approach to learning about our rescue techniques, rehabilitation process, and research projects. Using real case studies, students are taught how to diagnose seal and sea lion patients based on lab results and observations as well as learn about human impact on ocean ecosystems. In all, more than 1,000 students participated in this new learning experience and its popularity is growing with teachers throughout the Bay Area!

Conservation Story— Hawaiian Monk Seal Primary Care Hospital

For the last decade, The Marine Mammal Center has worked closely with government agencies and nonprofit organizations in Hawaii to provide medical assistance to sick and injured Hawaiian monk seals.

The species is declining by a rate of 4% per year and there are fewer than 1,100 left in existence. Our work in helping to conserve Hawaiian monk seals—the most endangered seal in the U.S.—often includes flying veterinary teams to Hawaii to provide hands-on medical care in less than ideal conditions and in make-shift facilities.

In 2010, we raised more than \$500,000 towards building the [new primary care hospital](#) in Kona and in 2011, we continued our strong fundraising momentum towards raising the remaining funds needed to break ground in 2012. This hospital will be dedicated to rehabilitating this species and will become the primary medical facility for monk seals throughout the Hawaiian Islands. With its species-specific pools and medical laboratory buildings, the soon-to-be built hospital is part of a bigger solution to help Hawaiian monk seals.



HAWAIIAN MONK SEAL PRIMARY CARE HOSPITAL DONORS

The Marine Mammal Center gratefully acknowledges these gifts received in the 2011 calendar year.

\$10,000+

Anonymous (2)
Pat Callahan
Susan Grau
The Dirk & Charlene Kabcenell Foundation
NOAA National Marine Fisheries Service

\$5,000 – \$9,999

Hawaii Wildlife Fund
Glen Mathison & Zoel Fages
Pacific Life Foundation
Alice Robinson
Jane & Dean Woodman

\$1,000 – \$4,999

Patricia & Peter Arrigoni
Barbara & David Beasley
Mr. & Mrs. George Bradford
Joyce B. Doheny
Samuel Greenspan
Sophie & Robert Guarasci
Coco Hall
Robert Klein
Cecily Majerus
McKesson Foundation, Inc.
Mr. & Mrs. Maurice Myers
Mary & Tom Pillar
Jo Ann Stepien
Philip & Jean Warren

Up to \$999

Anonymous
Laura Adler
Edwin & Jean Aiken
Mr. Robert J. Amos
Dale Alison Anania
Cynthia Anderson
Erick Anderson
Lauren Andronici
Willaim Angus
George Antonelis
Kathryn Arnold

Arsia Ashjaee
Cecelia Azhderian
Dr. Jason Baker
Jayne Baker
Ed Banford
Michelle M. Barbieri
Leslie Battaglia
Lesley Bauer
Kathie Bealer
Barbara Beaudot
Donald Becka
Brenda Becker
Stephanie Beddia
Christine Beddia
Jennifer Beddia
Amy Belser
Sommer Berlanga
Dan Biggins
Leon & Cherry Billings
Erin Billings
Michael Boorstein
Brian Boudreau
Patricia A. Bova
Miss Ruth Bradshaw
Andrew Braun
Jennifer Bridge
Dr. Shawna Brizzolara
Anna Brock
Pegan Brooke
Maeve Brown
Bonnie Brown
Greg Buchanan
Linda Buchanan
Claire Buchanan
Sherron Bull
Tracey Burke
Nancy Calcara
Kathleen Callis
Emil Caluori
Heather Campbell
Stephen & Ruth Canham
Martha Carleton
Douglas Carlson
Robyn Carmel
Ryan Carmichael

| | | | | | | | |
|---|---------------------------|-------------------------------------|----------------------------|--------------------------|----------------------------|----------------------------|-----------------------------|
| Dr. Julie Cary | Valerie Face | Dillon Harless | Jane Khudyakov & | Betsy Mason | Hal Offen | Keith Rutledge | Jeannie Teifel |
| Arleen Castro & Henry B. Korn | Cliff Fairchild | Malik Harris | Joseph Schramm | Jennifer Massey | Guy Oliver | Joe Ryan | Gerl Thayer |
| Dr. Daniel Cavallo | Robert Farrell | Annalee Harris | Melissa King | Nancy Masu | David Olsen | Maria Sabatini | Robert Thomas |
| Darlene & Jessea Ceremello | Eleanor Farrell | Allison Hart | James, Carla & Sarah King | Keith Mazzella | Alex Ooi | Anita Sabatini | Liz Thompson |
| Natalie Champagne | Jennifer Farris | Leslie & Zac Hart | Gigi King | Kimberley Mazzoni | Christina Oshetski | Dede Sabbag | Brent Thomson |
| John Chappell | Deborah Fauquier | Linn Harter | Terry Kleid | Gary Mccabe | Jim Oswald | Leticia Sandoval | Christine Tobkin |
| Erika Check Hayden | Scott Ferguson | Sonya Harth | David Klott | Christina Mccall | Angela Palermo | Jean Sarver | Paul Torpey |
| Kimberly Chen Bock | Karen Fernandes | Albert Harting | Betty Kohlenberg | Suzanne Mccandless | Pauline Patterson | Marietta T. Scaltrito | Patrick Tubridy |
| Erica Cirwithen | Linda Ferris | Karen Hartwig | David Kollmorgen | Danielle Mcelveen | Joan Pearson | Jeff Scharosch | Julie Tucker |
| Scott & Laura Clark | Charles & Cynthia Fischer | Ferron Haryanto | Michael Kong | Jacqueline Mcevoy | Katlin Pechin | Kevin Scheer | Gina Ubl |
| Kendall Clark | Maureen Flannery | J. Gary Hastings | Jean Korn | Alex & Anne Marie McGraw | Deborah Peirano | Emily Schlesinger | Noelle Uglesic |
| Ellen Clementson | Michelle Fleetwood | Jesse Hatton | Laurie Korn | Kevin Mcguire | Dan Pelsinger | Cathryn Schroettner | Mark Urby |
| Christine Clinton | Rachel Flynn | James Hayes | Gail Koza & Paul Meskell | Deb Mcguire | Ljiljana Pena | Lisa Schwab | Dr. Kecia Valdez |
| Pat Clough | Kevin Foley | James Head | Elizabeth Krivatsy | Jeremy McLaughlin | Veronica Pena | Sharon & Joel Schwartz | RJ Vasquez |
| James Cloward | Thomas Foley | Reuben Hechanova | Janice Kubota | Sean Mcneil | Maria Pereira | Nancy Schwarz | Valerie Vaughan |
| James Coe | Cindy Fong | Janet Hedley & Richard A. McCormack | Ann Kushmerick | Melissa McTague | Samantha Perito | Eric Schwarz | John Vitale |
| Alec L. Cohen | Robert Foxe | Sue-Ellen Hemmert | Michael Kwan | Marie Mehlhaff | Doug Perrine | Andrew Serafine | Melinda Volkert |
| Steven Collins | Kenneth Frank | John Henderson | Debra Lagrave | Dr. John Meisenheimer | Helen Pollicove | Jim Shafer | Guy Volz |
| Michel & Laura Conrad | Ann Frank | Warren Hennig | Ed Lai | Carol Memminger | Kyle Poor | Frances & Samuel Sherwood | Melanie Vonhartitzsch |
| Michael Coren | Troy Freeman | Michael Hersey | Benjamin Last & Julia Buck | John Memminger | Cheryl Popp | Wesley Powell | Theresa Wagner |
| Ms. Meybel Cortez | Sarah & Brian Freiermuth | Kathryn Ho | Helen Lautenslager | Natalie Menacho | Janice Post-White | James Powell | Kathleen Walbridge |
| Maria Coulter | Chih Garbus | Barbara Hogan | Susan Lautenslager | Stephanie Meneses | Wesley Powell | Christine Powers | Carol Watson |
| Vicki Covert | Anne Garneau | Shannon Holland | Franko Lazarich | Kurt Menning | Christine Powell | Margaret Preo | Jessica Weinberg |
| Kellie & Michael Cox | Marcus Gary | Rhonwyn House | Alice Lee | Ronald Menzin Md | Jerell Price | Francisco Prieto | Elizabeth Weinhold |
| Michael Cox | Ken Gaskins | Dayton House | Erika Lee | Alice Merrill | Francisco Prieto | Stephen Puryear | Brooke Weinstein |
| Jeff Criswell | Lynn Giacobbe | Kristine Hubner | Olivia S. LeFeaver | Cosmo Messimer | Mrs. Effie Quintana | Francisco Prieto | Carol & Jeffrey Weiss |
| Megan Crosby | Mary Giannini | Liz Hughston | Nancy Levine | Peggy Mihelich | Annice Rains | Stephen Puryear | Alexander & Pamela Weissman |
| Satin Crystals | Jody Gibney | Greg Hulbert | David Levine | Dr. Cecilia Mikita | Tirumala Ranganath | Mrs. Effie Quintana | Mary Lynn Werthwine |
| Ruth Culp | Amanda Gillespie | Joanne & Daniel Hurwitz | Debbie Levine | Terry Miles | Steven Rathfon | Annice Rains | Jill Whitebook |
| Kristin Culp | Jon & Anke Gingrich | Charles Hwang | Bernie Levine | Jeff Miller | Mary Ray | Tirumala Ranganath | Elizabeth Whitney |
| Linda & Tim Curtis | Loretta M. Giorgi | Susan & Edward I. | Hannah Levine | Melina Minas | Carla Reed | Steven Rathfon | Mike Whittington |
| Maria Da Costa | Camilla Glover | Beth Inadomi and Tim Newell | Marcie Levine | Robin Minor | Elisabeth Reed | Mary Ray | Karen Wible |
| Kerri Danil | Anonimus | Racquel Ismael | Dr. Gregg Levine | Vernon Miura | Robert Reichardt | Carla Reed | Brent Wilkerson |
| Dr. Jacqueline Dawley | Ms. Harriet Golombek | Morgan Ives | Jennifer Lewis-Gallagher | Mitra Mohsenian | Rita Reid | Elisabeth Reed | Sandra Williams |
| Rudolph Demay | Sandy Goncarovs | Tom Jackson | Colleen Leyrer | Stefanie Montano | Barbara Rich | Robert Reichardt | Ashleigh Wingate |
| Emily Devine | Adam Goodman | Charlotte Rose, Kara Shea & James | Dr. Charles Littnan | Mark Moore | Daniel Richards | Rita Reid | Jeffrey & Margie Winnick |
| John Dillon | Megan Granata | Dr. Sarah Janssen | Mac Liu | Mary Park Morison | Terry Rillera | Barbara Rich | Beth Wise |
| Cynthia Dodge | Noel Grandrath | Stan Jensen | James Lloyd-Smith | Diane Moroni | Mr. & Mrs. John Roberts | Daniel Richards | Brian Woods |
| Abby Donahoe | Adrienne Granger | Angela Johnson-Davis | Jessica Lopez | James Mulcare | Maurice Robichaux | Terry Rillera | Susan Wooten |
| Rosamund Downing | Sonnet Grant | Dana L. Jones | Phyllis Lorenz | Carolyn Munding | Kathleen Rocho | Mr. & Mrs. John Roberts | Linda & Steve Wurzel |
| Stacy Drucker | Joan & Kris Greene | Holly Jones | Scott Lorenz | Mark Myers | Bethany Rocho | Maurice Robichaux | Gary Young |
| Amy Duck | Rebecca Greene | Charlotte Jones | Brian Loretz | Khokholva Natalia | Kathleen D. Rodine | Kathleen Rocho | Zee Zaballos |
| Colleen Duncan | Mike Greene | Jeff Jouett | Angelique Loscar | Lisa Nausin | Pamela Rodriguez | Bethany Rocho | Eva Zei |
| Ardys Dunn | Ann Greening | Anna Jurgens | Stefeni & John Luman | William Neal | Evan Roman | Kathleen D. Rodine | Art Zorka |
| Marvin & Ardsy Dunn | Tina & John Greig | Anthony & Susan Kamellard | Dr. Gene Lyons | Suzanne & Lin Neal | Lisa Rose | Pamela Rodriguez | |
| Mr. Guillaume Duport & Mrs. Maureen Courcenet | Sarah Greiner | Michelle Kay | Jennifer Macdaniel | Peter Neubauer | Doug Ross | Elizabeth Rogers | |
| James Durkin | Donovan Grice | Melisa P. Kaye | Emily Magnaghi | Hannah Nevins | Lynell Ross | Evan Roman | |
| Liz Ellis | Cathy Guarasci | Gale Kelsey | Kristen Mansel | Linda J. Newell | Patricia & Glenn Rudebusch | Lisa Rose | |
| Chris Eltiste | Caroline Hagele | Eden Kennan | Marianne Mantoen | Lorna Newlin | Gloria J. Ruef | Doug Ross | |
| Duane & Marjorie Erway | Dr. Ailsa Hall | Claudia Kennedy | Crisula Markoulis | David Newlin | Valerie Rust | Patricia & Glenn Rudebusch | |
| Al Everson | Andrea Hall | Velvet Key | Mary Markus | Darleen Newlin | | Gloria J. Ruef | |
| | Carol Handelman | | | Barton Newlin | | Valerie Rust | |
| | Lynn Hanna | | | Teri Nishikawa | | | |
| | | | | Brian & Sandy Norris | | | |
| | | | | Tenaya Norris | | | |

If you recognize an error or omission in this listing, please accept our sincerest apologies and feel welcome to contact Development & Administrative Coordinator Marissa Kalashian at 415.289.7335 or dev@tmmc.org.

Corporate Partners Accomplishments— Supporting Education Through Generous Gifts and Connections

The Center graciously thanks its corporate partners who, in 2011, contributed more than \$728,722. [Learn how you can become a corporate sponsor.](#)



Dawn and The Marine Mammal Center Save Wildlife

In 2006, Dawn and The Marine Mammal Center began working together, due to a great relationship with our fellow wildlife champions, International Bird Rescue. As a result, Dawn became one of the largest corporate donors to the Center, and even today, our partnership inspires children, parents and educators through Dawn's wildlife conservation campaign.

The launch of the *Dawn Saves Wildlife* campaign in 2009 fostered recognition nationwide, particularly as widespread news coverage of the 2010 Deepwater Horizon oil spill in the Gulf, revealed the horrific impact on regional wildlife and fragile ecosystems. Dawn dishwashing liquid has long been recognized for cleaning wildlife affected by oils spills. A natural next step was to teach our children, the ambassadors of the future, how they can help protect our ocean treasures. The Center and International Bird Rescue (BR) each received \$250,000 in contributions from Dawn's campaign and in turn the Center and BR were able to help further their missions to advance knowledge about the wildlife each protects. The Center designated the proceeds of this gift to its veterinary science program that gives sick and injured marine mammals a second chance at life.

Tedeschi, a Guadalupe fur seal, was rescued by volunteers in San Luis Obispo County. She was suffering from hookworms and malnutrition, and also had traces of oil and tar on her fur. Veterinary staff were able to clean her fur using Dawn dishwashing liquid.



Partnering to Bring Wildlife Education to Disadvantaged Schools

Inspired by the Washed Ashore ocean trash exhibit at the Center, the Biz and Livia Stone Foundation helped us initiate a new program focused on the intersection of marine science, ocean conservation and education.

Biz Stone (co-founder of Twitter) and his wife Livia are passionate wildlife conservationists. In 2011, through a generous donation from their Foundation, our instructors were able to bring the Whale Bus (a marine mammal museum on wheels with real specimens such as bones, pelts and baleen) to four schools in Oakland, Alameda, Richmond and San Francisco, teaching marine science to more than 1,100 disadvantaged students. Additionally, their vision and leadership inspired the creation of the 2011 Gala Fund-a-Need which allows us to bring a second Whale Bus **free** to nearly 5,000 more disadvantaged students in 2012! The apparent need and desire for the program far exceeded the Center's expectations, and within days of the opportunity being presented to schools, the Whale Bus was booked for 33 days—a record!

Biz and Livia also introduced us to Hewlett Packard, a new corporate partner. HP generously supported our Gala as title sponsor and is furthering its support of our educational efforts by augmenting our technology needs and brainstorming new ways to expand our programs around the globe. Imagine if we could reach not only thousands of students in the Bay Area, but many more around the entire planet!

Our Donors

The Marine Mammal Center thanks and proudly recognizes the support of its donors during the 2011 calendar year. These gifts to the Center sustain its ongoing work in animal care, scientific research and marine science education.

CHAIRMAN'S CIRCLE

\$50,000+

Anonymous*
Faye & Sandor Straus—
Firedoll Foundation*

\$25,000 – \$49,999

Jeanne Bobbitt*
Pat Callahan*
Elena & Arthur Court*
Susan Grau*
Virginia & Glenn Haldan
Ambassador & Mrs. Arthur
C. Latno, Jr.*
Carol & John Simon
Carole Strauss*
Jeanne & Harold Williams*

\$10,000 – \$24,999

Anonymous
Dr. Anurag Acharya & Dr.
Madhuri Chattopadhyay
Ms. Lee Caraher
Linda Gibboney*
Betty & William Hasler*
Karen Johnson-McKewan
& Tom McKewan*
Michael Kleeman*
Catherine Kruttschnitt*
Betty White Ludden
Cinnie & Merrill Magowan*
Glen Mathison & Zoel Fages*
Sunny & Mark McKee*
A.E. & Martha
Michelbacher Fund*
Kim Polese
Julie & Martin Richards
Eric Roberts in memory of
Leanne B. Roberts*
Gaile Russ*
Suki Shepard
Robert Sprague
J. Holley Taylor
Jean & Phil Warren*
Nancy & Gregory Wilson*

PROTECTED RESOURCES CIRCLE

\$5,000 – \$9,999

Mary Bachman & William
Downing*
Ron Conway
Barbara W. Demere
Adelaide & Raymond
Demere
Lois A. Enslow*
Elaine Genevro
Shirley & Lee Griffey—
Griffey Family Fund
Ingrid Hills—The Edward E.
Hills Fund*
Christine & Robert Hunter*
Beth Inadomi & Tim Newell*
Mrs. George F. Jewett, Jr.
Jeanie & Murray Kilgour*
Cecily Majerus
Kathryn Reavis & David
Strohm
Carol & John Simon
Livia & Biz Stone
Karen & Stan Watt
Chad Carlson & Ed
Westerman*

\$2,500 – \$4,999

H.R. LaBar Family
Foundation Fund of
The Greater Cincinnati
Foundation
Lynda A. Barnes
Martin F. N. Cooper*
David Edelsohn
Marion & Jack Euphrat*
Mary & Clinton Gilliland
Florence & Steven Goldby*
Lynne Hermle & Craig Collins
Kern Family Fund*
Debra Kerr
William & Gretchen Kimball
Fund*
Joanne L. Lasnier*

Carol & James Layne
Rachael & Marshall Levine
Liz & Mel Lyman
Douglas & Michele
Magowan*
Doretta & Robert Marwin*
Avid Modjtabai
Dorothy E. Orolin*
Bonnie & Joseph Phair
Virginia Reiman
Kathy & David Sicially
Jill & Richard Sideman
Pat & David Spagat*
Jill Spicer
Amy Stone & Chris Stone*
Kathryn & Robert Vizas*
Julia Winiarski

\$1,000 – \$2,499

Anonymous* (5)
Anonymous (2)
Lawrence Adams
Lisa Albani
The Winifred & Harry B.
Allen Foundation
Abigail Amit
Mr. Robert J. Amos
Warren E. Anderson*
Patricia & Peter Arrigoni*
Adu Bagley*
Rocky & Shelly Barbanica
Douglas Barnes*
Darla & Richard Bastoni
Ms. Sharon A. Beckman &
Mr. Gregory N. Brand*
Paul & Mildred Berg*
Holger Berndt
Charles D. Berry
Maria Berry*
Michelle & Garrett Blake
Jeff Boehm & Keith
Rosenthal*
Susan Boster
Ida Braun
Marilee Brooks*

Jacqueline Brotz
Dr. Silvia Bunge
Helen & Dave Burton*
Julie Busch
Deborah Carlton
Barbara Carr
Joy & Dennis Casciato*
Laura & Alan Charles
Helen & Felix Charpentier*
Evelyn & James Chumbley
Kenneth & Laura Clarke
Shirley Llanos-Clayton &
Scott G. Clayton*
Mark Cocalis & Lisa Ann
Erburu
Dr. Stanley N. Cohen &
Mrs. Joanna L. Cohen
Rebecca & David Conant*
Marion Cope
Ingrid Woods & Steven
Cummings*
Lynn & Bruce Dayton
Charles de Guigne*
Helen D. Demes & Kevin G.
Sloan*
Pamela Derby
Diane Diggins*
Susan & Wendell Dinwiddie*
Brian Dodge
Ann Domm*
Sherry Dunning-Riley*
Guillaume Duport &
Maureen Courcenet
The Black Dog Private
Foundation
Kathy Estes-Morgan & Rod
Morgan
Waltraud Finch
Robert & Joan Braddock
Michelle & Robert Friend*
Marilyn & Bob Garibaldi*
Liana Genovesi & Scott
Ahrendt
Alyce Gershenson
Val & Jerry Gibbons*

* **Five years or more consecutive giving** If you recognize an error or omission in this listing, please accept our sincerest apologies and feel welcome to contact Development & Administrative Coordinator Marissa Kalashian at 415.289.7335 or dev@tmmc.org.

Danielle & Mike Gilmore*
Carol & Benjamin Greenspan
Sara G. Griffith
C. Stephen Kriegh & Pamella S. Gronemeyer*
Michelle Gursky
The Gustafson Family
Bernice Hansen*
Hope & Osborne Hardison
Norman Harris
Hugh Harsh
Anne Herbst & Peter Munks*
Lesly Higgins & Joseph Bunker
Paul & Marianne Hoffman
Peter Hricak
Christine & Gary Hromadko
Grace A. Hughes Fund*
William Hunter*
Becky Wong-Insley & Mark Insley
Lisa Jeffrey*
Mr. & Mrs. James T. Jensen
Stan Jensen*
Eric Joe
Gary & Casey Jones
Jim & Lorna Keefe
Arlene & Francis Keesling*
Susan L. Keller*
Ms. Kay Kennedy*
Margaret E. Kiley*
Dawn Kinney*
Suzanne & Jerry Knecht
Gayle Koan*
Ms. Jennifer Kosloski
Dr. Roger Lang & Mrs. Sue Lang*
Karen Larsen*
Meredith Lattin, LCSW
Leona Lauder*
Jennifer & Chuck Laue
Ruth Levitan
Arabella & Robert Levorsen*
Marie & Barry Lipman*
Janet B. Lockard*
David & Diane Logan*
Judy Logsdon
Gale & Jon Love*
Denise & Chris Lundquist
Dana Lurie*
Charles & Julie Magowan
Melvyn Mark
Barbara & Fillmore Marks*
Belinda & David Martinez

Alan C. Mathewson*
Ms. Mary P. Maurer*
Joanne & Paul Maxwell
Ramona & John Mays
Maureen McClain*
Jennifer McComb*
James McCurdy*
John McQuown*
Mara Melandry
Victoria Mercer
Nancy Merchant*
Gail Koza & Paul Meskell
Elsa Mikkelsen*
Karla & Gary Miller*
Nooshy Mobasher
Rebecca Moyle & Tyler Lange
Gertrude Musey
Irene Myers*
Maurice & Jean Myers
Linda Nelson & Bob Kaliski
Marina Nichols & Jesse Fielding*
Christine M. Nitz
Olivia Orr*
Ingrid M. Overgard*
Marian & Al Pawlick
Arlene Peacock*
Jane & Richard Peattie*
Ann Petersen
James & Eleanor Plessas*
Elizabeth Rakestraw
Victoria & Sam Reed*
Linda Remais*
June Richard*
Jenny Risk
Pamela Roby*
Lorelei Rockwell & Wayne T. Kennedy*
Pam & Bill Sagan
Whitney Sagan
Christi & Tim Saltonstall
Michael Scharfenstein*
Linda Schmidt
Richard See*
Susan Shapiro*
Charlene & Bob Shaw
Russell & Beth Siegelman*
Veronica Soto*
Janecke & Peter Stauffer/
The David P. Wheatland
Charitable Trust
Dean & Joanne Storkan
Beth & Kevin Sullivan
Ms. Julia W. Sze
Beverly Tanner & Jerry Herman*

Scott & Patricia Teaford*
Richard & Christina Thalheimer
Jean S. Thomas*
Melissa & Thomas Thornhill
Barbara & Donald Tornberg*
Marguerite & Peter Trethewey
Jim & Karen Truettner
Tim & Valerie Tucker*
Kathy Tyson*
Kate & Richard Vance*
Mary Ann Vasconcellos*
Jennifer & John Vogel*
Bettina Warner*
Patricia & Brian Wilson
Barbara & Thomas Wolfe
Jane & Dean Woodman
Islon Woolf & Eva Melnikova*
Stanley Yamane
Natasha Yankoffski*
Jeri L. Young & Derrick Jensen
James Andrew Zurn

\$500 – \$999
Anonymous* (4)
Anonymous (6)
Barbara Adams
Douglas Andelin
Emily & Adolphus Andrews
Ann Griffith Ash
Laurie Ashley*
Elcio R. Barcelos
Paul Bartlett & Yumi Nakagawa*
Annette Bator*
Cathy & Lee Battles
Joyce & Tom Bauer
Jeannette & Frank Baumgardner*
Martin S. Checov & Timothy J. Bause*
Lorraine Bazan & Chris Stover*
Cindy Beckett
James & Lisa Beckstead
Rita & Stanley Bell*
Barb Berman*
David L. Berry
Sheila Bigelow*
Bob & Sissy Blanchard
Stephen Boles
George & Susan Bono*
Donna & John Borden
Marguerite Bordwell
Mary Boyce

Ruth H. Brandt*
E. A. Bright, II
Mrs. Walter F. Brissenden*
Carol Brookman*
Lynne & George Brown*
Cheri Boker*
Susan & James Burns, Jr.
Ken Busch
Elisa Camahort
Paula Canny
Sheva Carr
Shirley Carson
Peter & Barbara Cartwright
Winifred Case*
Shirley & Jeff Causey
David & Karin Chamberlain
Gordon Chamberlain*
Kelly Chessen
Kimberly Christensen & David Sielaff*
Larry & Nancy Church*
Margaret Lopata & Don Cleveland*
Zorus & Judith Colglazier
Rebecca & John Colligan*
Michel & Laura Conrad
Kenneth A. Coren
Stephen & Cindy Corrigan
Mrs. Barbara S. Cox*
Linda & Tim Curtis*
Virginia Czarnecki*
Denise & Gary David
Grace Davis*
Susan Davis*
Shirley Dawson*
Sandra Brod & Dennis DeDomenico
Laura Deikel
Sue Dekalb*
Shari Delcarlo
Sharon & Kirch DeMartini*
Elizabeth & Paul Denison*
Dr. Barbara Dittmann*
Joyce B. Doheny
Panna Doshi
Connie & Mike Dowler*
Glenna Dowling*
Margaret Doyle*
Susan Doyle
Michelle Driscoll*
Mrs. George Dyer
Martha & Anthony Eason*
Rear Admiral & Mrs. Thomas J. Eccles
Sharon & Samuel Esterkyn*

Rosemary Fei & Gary Harrington*
Richard F. Ferraro & Paula C. Lowe
Charles Ferris*
Richard Ferris
Elizabeth M. Field
Dennis Fisher
Mitchell & Denise Fong
Myrna & Henry Fourcade*
Nancy Gabaldon-Bennett
Lisa & William Gala*
Denise Garner
Mrs. William D. Geiger, Jr.*
Hilary & Skyles Glann*
Kimball Gottschall*
Anthony & Caroline Grant*
Kent Eff & Heather Gray Eff
Susan Gray
Tina & John Greig
Dean A. Grubb*
Nancy Grunbaum
Maureen Hackett
Eugene Hanes*
Jane A. Hansen & Ed Fowler*
Judith M. Harada
Karen & Rick Hargrove*
Jeanne & Kent Harvey
Jean Helzer
Joan & John Hines*
Susan Hoeschler
Karen Holme
Steven & Laurie Holmstrom
Sally Holt*
Helen Hooper McCloskey
Julie & Gregg Hosfeldt
Joe B. Hudgens
Marge Humphreys*
Elizabeth A. Jackson
Anne & Edward Jamieson*
Diane Jaramillo*
Lee & Wini Jebian*
Anna Jeffrey
Robin & Robert Johansen*
Loretta Jones
Eunice Kamimura*
Anita & Mark Karier*
Janey & Kevin Kaster*
Carlyn Clement & Christopher Kaufman*
Maureen & Jim Kearney*
Karl Keesling
Todd Kelting & Melissa Neiman-Kelting*
Elizabeth King*

Nancy J. Klokner & David M. Wiseblood*
Dr. Eleanor Knudson
Sonoko Konishi & Ewan Johnson*
Krystal & John Konrad*
Christine Koski*
Linda M. Koza
Meghen & Ken Kurtzig
Shyam Kuttikkad
Carole & Charlie Lamar
Amy Lange
Sally Lappen & Nik Warren
Benjamin Last & Julia Buck*
Catherine Latham*
Marta Lawrence*
Belina Lazzar
Robert Le Bras-Brown
Catherine & Patrick Lee
Cindy Lee & The Wags & Menace Foundation*
Jeffrey & Lara Lehmer
Patricia A. Leighfield*
Lamar Leland
Ethel & Allan Lerche*
Cheryl & Kevin Leslie*
Robert & Barbara Lewis*
Irene & William Lincks*
Paul Lindstrom*
Richard & Laurie Ling*
Susan Liu*
Vicki Lohr*
Bill & Edy Loorz*
Diane Luders*
Christian D. MacDonald*
Shana Mahaffey
Noreen Mahoney*
Joshua Makower
Elizabeth Manning
Sherri Matteo
Margaret Maw*
Lily McCleary*
Martha McClellan*
Kathleen McEwen
Vernon McFarland-Brown
Christina A. McKinley
Alice Mead
Purple Lady/Barbara J. Meislin Fund*
Barbara Meyer
Lenore & Dale Meyer
Fund of the Community
Foundation for Monterey
County
Albert & Jennifer Mishaan
Katharine Mulvany

Susan & Paul Nagata*
Yukiko & Robert Nakano*
Jocelyn Nelson
Kathy Newton
Jennifer Ng
Ellen & Robert Niemitalo*
Donald J. Nolan*
Janet O'Brien
Ms. Nancy E. O'Brien
Dr. Carol A. O'Neil
Chad Overway
Nancy Ozard*
Pat & Mauricio Pages*
Helen Pass
Catherine Latham*
Geoffrey F. Peters*
Nancy Pettengill*
Regina Phelps
Bob & Alex Phillips
Iris Polos & Michael Brown
Ms. Donna Pritchard
Connie Pugh
Ronald E. Rasmussen*
Karen & Guy Reynolds
Sylvia L. Reynolds
Jean Rieke & Patrick Maguire
Craig M. Ring & Jane H. Hartwell
Justin Ritter
Deborah Robbins
Ina Robinson*
Michelle Robson
Heather Rock*
John H. Rockwell, III
Carol & Robert Rowberg
Patricia & Glenn Rudebusch
Dominic Russi
Tina & David Saling*
Peter Benson & Thomas Savignano*
Katharina Scharruh
Marcia & Nathaniel Schmelzer*
Kris & Joe Schratz
Judith Schultz*
Phyllis Schwartz
Rebecca Schwert*
Christine Scott
Carolyn Sell
Mary Severson*
Danae Sharp
Amy Shepard
Dr. Barry Sheppard
William Shewry*
Christine Shields*
Ms. Aleda Siccardi

* **Five years or more consecutive giving** If you recognize an error or omission in this listing, please accept our sincerest apologies and feel welcome to contact Development & Administrative Coordinator Marissa Kalashian at 415.289.7335 or dev@tmcc.org.

Kevin Sidow
Veronique Laband Siggins
& Peter Siggins
Patricia R. Silver*
Karen & John Silvey*
Julie Simons*
David Siska & Melissa
Martin
Laurie G. Smith Bowlbliss
& Jim Bowlbliss
Fran & Robert Smith*
Patricia D. Smith
Henry Sohn
Mary G. Souza*
Beverly Spector & Kenneth
Lipson*
Jacqueline & David Spielberg
Mae Stadler*
Henry Stauffer*
Patricia & Marc Strohleim*
Richard Swinney
Akiko Takahashi*
Teru Taketa*
John Taylor
Margaretta Taylor*
Roy E. Teo, Jr. & Silvia Teo
Gutierrez
Ruth & David Thompson
Molly & Harry Thorpe, Jr.
Kristie Tice
Terri Tienken*
John & Tashia Morgridge*
Stephanie Travis*
Gina Trinchero
Karen Trudeau & Kevin L.
Delaney
Julie Turner*
Catherine Valentine
Ms. Ellen A. Venton*
Karyn & Eber Verhovsek*
James Vestal*
Deborah & Bruce Wagman*
Anne-Marie & David Walker*
Kaela Walker
Rob & Karen Wamstad
Lee & Bill Webber*
Robert Weisblatt*
Joseph Wender*
Ruth West*
Ceil A. Whitney
Diane B. Wilsey
Bob Wilson*
Mr. Robert D. Wilson
Carol Wolf*
George Work
Carol Wulff

Lisa Young & Karl Cox
Martin & Margaret Zankel
Brian Zeiler
Jean Zukin*
\$250 – \$499
Anonymous* (13)
Anonymous (6)
Rosalind S. Abernathy*
Steve & Gail Abrams
Susan Adamson*
Kristin Ahlquist
Kent Ainsworth
Janis Allard
Jill Allread
Kelly Anderson
Kristin Anderson
Dr. Robert Anderson*
Jon Andreas
Chris Andrian
Constance Andronico*
Jeremy Chapman
Robert & Jean Walraven*
Gary & Karen Holm*
Naomi & Bruce Appleton*
Edward Arens
Jane & Douglas Ashe*
Georgene Aster
Steven & Kathleen Atnip
Robert H. Aughtry*
Debra Austin
Joan M. Axelson
Nicola Bach
Renate A. Bachalo*
Hattie & Fred Bahrt*
Kathy Bailey*
Marjorie Balazs
Darlene Balducci
Suzanne Baldwin
William Banker
Marilyn Barkin*
Julie Barney*
Susan & Sean Barrett*
Audrey Barris
Michael & Melanie Barti
Lisa Bartlett*
Hugh Barton
Laurie & Gary Baum*
Ted Bayer
Jeanne Beauchel-Bodiford
& L. J. Bodiford*
Albert Bechtel*
Susan Becker*
Elizabeth H. Becker Warne*
Jim & Tanya Beede
Marcia & Michael Belford*

Gary Bell*
Patricia & Al Bendich
Joan Benjamin
Deborah Benko
Beverly Benson*
Nancy Benson*
Joanne Bergen*
John Berger
Jeffrey & Susan Berman*
Mary Betlach*
Stacy Bezyack & Dana
Bialashewski
Jean M. Biancalana*
John & Sharon Biard*
Alice & Nelson Bickers
Cliff Bickford*
Mandi Billinge & James
Kliegel
Karen M. Birks
Cheryl Bizar*
Katherine H. Black*
Lauren & John Black*
Lynne Blair
Deborah T. Blankenberg*
Craig & Lauri Blek*
Peter & Isabel Blumberg
Ann & Gordon Blumenfeld*
Martha Bocalini & Heino
Nitsche
Mr. & Mrs. H.C. Bond
Michael C. Booth &
Michael Oliva
Andrea Borch
Kerry J. Boyd
Joyce Boyett
Sarah & Walt Bradley*
Kay P. Brennan*
Wendy Breuer
Janice Bridgham
Henry Brinck
Cynthia Brito
Louis M. Brock, Jr.*
Melissa Brosnan
Gregg & Dawn Brown*
Karen Brown
Maeve Brown
Thomas & Ruth Brown*
Stephen & Susan Browning*
Wendy Brunell
Cheryl Bruno
Amanda Bryan
Randall Brynsvold
Keith Buckingham*
Julie Buckner
Mary E. Bullard*
Terri Bumgardner*

Tracey Bunce
Sarah Bunkin & Todd Miller
Lolly & Jay Burke*
Lisa Burkett*
Barbara Busch*
Dovre Busch*
Kathryn Butler*
Pamela Butler
Thomas & Madelyn Byron
Caldwell-Greenwood
Family*
Mr. & Mrs. Michael G.
Callahan*
Paula & Jim Callaway
Barrie Callender
Marjorie Callow
Joan Cambray & Chuck
Hansen
Sammy Campbell*
Jane & Mark Capobianco*
Chris & Karen Carpenter
Kathleen Carrai*
Sandra Carroll*
Steve Cartt
Diane & Richard Cassam*
Joanna Cassese
Anna Catarina
Jill & Stephen Chambers
Barbara M. Champion*
William Chan
Peggy Childers*
Jonathan Childs
Delia Chilgren*
Patty & Geoff Chin
Diane Churchill
James Cirigliano
Carol & David Cislowski*
Cindy Civiello
Julie Clarke
Robert Clegg*
Mary Clemesha
Annelle Clute*
Linda & Richard Clymer
Gerald Codde*
Jordan & Elizabeth Cohen
Ronald J. Cohen
Thomas & Ruth Brown*
Shanahan*
Thomas & June Colby*
Alice Cole
Sandi & Gary Cole
Ryan Compton
Alice Comstock
Jane Cook
Kimberly Cook
Brian Cooley

Susan Cooper
Carole Coplan
Gail Costa*
Holly Costa
Russell Cox*
Linda S. Craig
Ruth Craig
Steven & Dora Croft
Maureen Cronin*
Diana & Peter Crook*
Diane Culbert
Katie Cullen
Barbara Cummings
Deborah & Matthew Cupal
Buzz & Cindy Danner
Erica Dao
Janet Darmody*
Joan Davanzo*
Lyndene Davis*
Deirdre Dawson*
Bonnie De Clark*
David & Ellen De Simone*
Jacquelyn J. Decoster
Joanne Del Prete-Rosten
Gretchen & Ronald Del Savio
Bonnie DeMaestri
Lynne M. Dempsey &
Glenn Scheitrum*
Richard DeNatale
Daniel Deniz
Sheila Desmond*
Roxanne Deurloo*
Cyndi Devereaux
Ronald & Kristin Dick*
Michael Dinucci
Peter DiVincenzo
Matthew Dixon
Denise Doetsch*
Robert Dollar & Family*
Phyllis & Del Domezio*
Patricia Dornan*
Lee & Dan Drake
Anthony Dresden*
Nancy Duffy*
Paul Duhamel
Heather Dumas*
Susan Colborn & Mike
Shanahan*
Thomas & June Colby*
Alice Cole
Sandi & Gary Cole
Ryan Compton
Alice Comstock
Jane Cook
Kimberly Cook
Gregory Ellis
Scott Elrod & Molly Black

Tina R. Engel
Dennis Ertsman
Heather Evans*
Cheryl Ewing
M. Eleanor Fahrenwald
Geraldine Farmer
Maureen Faul
Jamy Faulhaber
Lewis J. Feldman*
Jennifer Felts
Daniel Ferrick & Carol S.
Marshall*
Linda Ferris*
Suzanne & Conrad
Buzz & Cindy Danner
Katie Lee & Mr. Brian Finck
Peter Fischer*
Peter Fisler
Kathryn Fitzgerald
Stephanie Flaniken
Alice Mead & Richard
Flaster
Sally Fleming*
Mr. & Mrs. Joseph
Fletcher, III
Kevin Fobes
Ellen Forwalk*
Jean & William Foskett*
Marilyn Foster*
Pauline Fox*
Nancy G. Frakes*
Jennifer L. Franecke
Rich Frank*
Margot Fraser Fund
Bruce & Sharon
Fredrickson
Jeff Freedman*
Sheira Freedman
Susan Freiwald
Carolyn Fremgen*
Robert Friedman*
Lisa Scheff & Theresa
Friend
Raymond & Catherine Frink*
Justine Frischmann
Elizabeth Gabler
Jacqueline Gaffney*
Steve & Sarah Gajadhar
Marian Gallerani
Carol Gamble*
Ms. Patty Garbarino
Ruby I. Garcia
Gayle & Keith Garrett
Lisa Gee
Roxane Geggie*
Amy Geissinger*

Margo George*
Cheryl & Derlin German
Joan Getsinger
Hilary & Robert Giles
Michelle Gimbal*
Elisabeth Giovine
Tullio & Valerie Giudici
Jane Glaser-Stull
David J. Glenn*
Carol Goepferd
Lisa Goldman*
Sharon Goodman*
Teri Goodman
Jeanne L. Gordon
Michelle & Richard Goss
Emily Graham
Sarah Granger & Chuck
Pletcher
Elinor Granzow & Emily
Winston
Mignon Gravitch
Jeffrey Gray
Kathryn Green*
Susan Greendorfer*
Rebecca Greene
Juliet Gresk
Kimberly Griffin
Margaret Grimley*
Nannette Griswold
Nancy Grosfeld
Keith Grundy
Sophie & Robert Guarasci
Judith & Suresh Gurbaxani*
Kathy Simons & Jeff Gustafik
Charles & Ginger Guthrie
Mary Haack*
Jon Haber
Michael Hackett & David
Hale
Blanca Haendler*
Harry Haines*
John M Haines*
Judith E. Hall*
Deborah & Donald Halliday*
Michael & Darlene Hancox
Margaret Hannah
Jan Hansen*
Linda Hansen*
Paula J. Hansen*
Kathy Harcourt*
Ms. Patty Garbarino
Tracy Harcourt & Ed
Chejlava*
Katherine & Dominic Harle
Lawrie Harris*
Lisa Harris*
Gina & Steve Harris

* **Five years or more consecutive giving** If you recognize an error or omission in this listing, please accept our sincerest apologies and feel welcome to contact Development & Administrative Coordinator Marissa Kalashian at 415.289.7335 or dev@tmcc.org.

Sunny R. Harrison
S. Jill Harsin
Shari Hart
Ruth Hartmann*
Frances B. Hasenyager*
Chris Hass
Jean & Eugene Havens*
Hugh Havlik*
Meagan & John Hawkes
Beverly Haynes
Belle Clegg Hays*
Wendy Hayward
Carlyle Hedrick
Georgia Heid
June Heilman*
Karen Helmuth
Nanette & Nanette
Henneuse*
Sheila Henry
Michael Hensley
Deborah & Jim Hernandez*
Bruce & Joan Herriges*
Gerdika Hesche-Elberfeld*
Andree Hest*
Arthur & Nancy Hindman
Mary Hink*
Harvey & Peggy Hinman*
Tyler Hofinga
Mary Alison Hogan*
Margo & John Hohulin
Betty Holden
Kristine Holmes*
David Hooper*
Lynne Hooper
Janine Hornung
Steve Horowitz
Catherine Hoss*
Daniel Houlihan
Blake Howard
Judith Howard*
Lori Howard
Wendy L. Howell
Ping-Shun Huang*
Linda H. Huber
William L. Hudson*
Linda Hughes
Meredy Hughes & Bryan
Rockoff
Milton Hughes
Jeannette Hung
Michele & Bill Hunnewell
Ellen Hunt
Susan Hunt & Robert V.
Westerlund*
Tom & Cheryl Huse*
Karen Husher*

Mary Irwin*
Lisa M. Jakobsen & Hanna
Miller
Jacqueline Jankowski
Julie Jenkins
Carol M. Johnson
Deborah Johnson*
Linn E. Johnson & Patricia
M. Connor*
Sandra Johnson
Cristina L. Jones
Dorothy Jones
Lawrence Jones
Mary Lou Joyner*
Victoria Julian*
Kathleen A. Justice*
Richard & Antoinette
Justice*
Edward & Gayle Kane*
Drs. Michael & Elinore
Katz
Mary Louise Kaufman
Pamela J. Kearby*
Stan Keiser
Susan Keiser & Barton
Shaler
Patricia & Larry Keller*
Bonnie Kelley
Consuelo Kellogg*
Julie Kelsey*
Carol & Gary Kerbel*
Kevin & Genevieve Kerr*
Joseph Kibre*
Henry Kim
Dana & Michael Kimsey
Florence King
Gregory King
Jodi King
Sally Kipper & Philip Kipper
Jennifer Kirby
Nancy Kirita*
Roy G. Kirk*
Pamela Kirkbride
Cindy Kisshauer
Andrew Kivel & Susan
Goldstein
Diane Klein*
Julie Ann Knauer
Michelle & Frank Knight*
Kevin Koche & Saryn
Leibowitz
Chris Koepcke
Frances Kohler*
Gregory Korelich*
Neil Koris*

Henry Korth & Joan Korth-
Bradley*
Lisa Kossiver*
Mr. & Mrs. Wayne Krebs
John R. Krug & Janet F.
Au-Krug
Robert Krull*
Augie Kuo & Lisa Lejeune*
Keiko Kuroda*
Dennis & Sharon Kurtz*
Ann Laborde
Merry & Carter Lake*
Brian Lam
Everdina Lampe*
Kari Lamprech
Dawn Landes
Eric Larson*
Carmen M. Lasar*
Craig Latker & Rich
Denatale*
Cathy Laubscher*
Kathy Lazzaro*
Sharon Leach*
Nan & John Leavell*
Matthew Lefkowitz*
Gayle M. Lego
Cathy & Ted Lehmann
Hollis Lenderking*
Richard D. Leonard*
Michael Letourneau
Yvette Leung
Dick Levine*
Ms. Diane E. Levy*
Mark & Eileen Lewis
Dana & Rita Lewis*
Gracie Lieberman
Charles & Sharon Lindner*
Kathryn Littlepage
Sally Kipper & Philip Kipper
Peter Ralston*
Thomas & Gail Litwiler
Yi-Chang Liu
Kim Locey
Yolanda Lopez
Jayme Lotspeich
Teri & Don Lown
Jim MacDonald
Robert S. MacIntosh &
Betsy England*
Robert T. Mack &
Bernadette J. Reiss
Dawn Macris*
Karen A. Madsen
Bernice C. Maertz*
Jaimie Lock & Jonathan
Maguire

Charles & Rose Maher*
Antoinette Mailliard
Siobhan Maize*
Joel Makower
Peter & Amy Mangarella
Joan R. Manini*
Kristen Mansel*
Marin Mapstead*
Jennifer Marasco
Bobbi Marchand
Donna Marietta*
Louis Martin, Jr.
Redge & Carole Martin*
Dennis Martino*
Douglas A. Marx
April Mason*
Howard Masumura*
Carol Mattern*
Glenn & Dolores Matteucci
Jane Maxwell*
Johanna Mayer*
Dorothy & Thomas Mayer
Guy Mazula
Pam Mazzoline*
John & Renee McAmis*
John McArthur
Anne & Doug McBride*
George & Patricia
McCammon*
Beverlee McGrath
Bev & Bill McGraw*
Donald & Nancy McKay*
Edana McKenzie
Harry McKenzie
Robert & Rita Lewis*
Kristine McNeal
Chris Melancon
June Mellish*
Julaina & Richard
Mendlen*
Kate Merriman
Gabrielle Merritt
Carolyn Metcalf
Kathryn Meyers
Sally Meyner*
Sally & David Mikkelsen*
Amy Miles*
Jim Milleman
Jane Miller
Margaret Miller*
Susan & Walter Miller
Joyce Milligan*
Franco Minardos
William Minkler
Linda C. Minor
Marlin & Lee Miser*
James Mitchell

Evan Mizrachy
Mrs. Ellen Moffatt
Megan Moffitt
Mr. John V. Moore
Suzie & Bryan Moore
Robert F. Morris
Jonathan Morris
Mark Mortell
Mr. C. B. Morton
Kellie Muckleroy
Sherry Mulgrew
Glee & Chuck Murphy
Laurel N. Murphy*
Dorothy W. Murphy &
Barbara N. Kopp*
Kathleen Murray*
Lesta & Ian Nadel*
Karen Nakamura
Miki & Jennifer Nakamura
Brian & Shafia Neece*
Eleanor Nelson*
Gloria Nelson
Larry & Pamela Nichols*
Maureen & Ronald Nichols*
Natalya Nicoloff*
Tom & Anne Niesen*
Daniel A. Noble
Ann & Roger Noll*
Elizabeth Noronha*
Cynthia & James Nourse*
Laura Novak
Donald Nunemaker
Michael & Simona O'Hare
Elizabeth B. Fannon &
William F. O'Leary
Leslie Oakes
Elizabeth Obershaw*
James E. Oliver, Jr.*
Kathryn Olson
Linda Olson*
Scott & Una Olsson*
Lynne Onak*
Erwin Ordeman*
Elizabeth Orser-Cataldi &
Richard Orser*
Carmel Pacheteau
Karen Page
Garfield Pallister &
Christine Maher*
Donna Panico*
Pilar & Anthony Parducci
Soo Park
Caroline Paul
Pamela M. Pearson*
Guy Pelham
Ezekiel & Janice Perlo*

Gerry Pesavento
Mary Lou Peterson*
Pam & Jerome Petrie*
Cynthia Pett Dante
Andrea & Pat Phelps
Carlatta Phillips
Damon Phillips*
Rudy & Patricia Phillips
Christina & Chris Pihou*
Michael J. Piuze
Katherine Plack
Susan K. Plath*
Nelson & Priscilla Pletzer*
Judy Polatchek*
Jaume Pons
Oscar Porter*
Doug Post*
Janice Post-White
Jeffrey Price*
Allison E. Prince
Alyce Proctor*
Laura & James Putnam
Nancy Quintrell*
Melinda Ramm
Louise & Julian Randolph*
Pradeep R. Rao
Harry Rasmussen*
Gordon Ray
Susan Ray
Jean Razenne
Chris Read
Thomas S. Reavely*
Alex Reid & Gretchen
Schaffner
Helaine Reiner*
Ms. Carol Reinhardt & Mr.
David Redfearn*
Ernest H. Renzel, III
Barbara & David Rice
James Richardson
Keith & Jenny Richardson
Linda & Bruce Richardson*
Nicole Richardson
Laurose Richter*
Dr. Dwight Ridenour
Kurtis Rintala
Jennifer Rios*
Julie & Michael
Risenhoover*
Claudia & Lee Rismiller*
Bradley D. Ritts
Margaret & Joseph Rivera*
Alicia M. Robb
Teresa & Carmen Roberts
Heather Robertson
Christina Robinson

Nancy Roche*
Debra Rogers*
Shelagh & Thomas Rohlen
Debra Rose*
Jeanne Rose
Tedford Rose
Jonathan & Carole
Rosenberg*
Janet Rosenberg
Karen & Larry Rosenstein*
Tammy Ross
Alyson Rossi
William & Mia Rossiter*
Gladys Rouge*
Jeanette Rude*
Linda Rude & Richard
Levine*
Margaret & Nile Runge*
Josh & Finley Rupright
Shev Rush
Ingrid & Eric Ryan
Dr. Mona L. Sabuco*
Shabbir Safdar
Richard Saffir
Marilyn & John Sage*
Katheryn Salter*
Stephen Saunders
Sharon Savatski
Frank Scafani*
John & Betsy Scarborough
Christina Scarlott
Margaret Schadt*
Alexandra Scharff
Shirley Scheck
Joseph Scheuermann
Peter Schick*
Tobin Schiller
Eric Schmitt & Kim Chapot
Eva Schocken
Nancy Schoellkopf*
Robert & Patricia Schrot*
Mark & Kim Schultz*
Susan & Michael Schwartz
Michelle Schwartz
Merrill Scoppetto
David Scott & Olivia
Inoue*
Seadrift Association*
Anne & Edwin Seipp*
Charlene Selle*
Robin Seltzer
Christopher Senn*
Brett Settles
Frieda Shama*
Linda Shams
Pat & Merrill Shanks*

* **Five years or more consecutive giving** If you recognize an error or omission in this listing, please accept our sincerest apologies and feel welcome to contact Development & Administrative Coordinator Marissa Kalashian at 415.289.7335 or dev@tmcc.org.

Dr. William Shapiro
 Fay M. Sharer*
 Nora & Edward Shaw
 Lincoln Shaw*
 Stephen Sherwin*
 Barbara Shipman*
 Barbara & Neil Shooter
 Vicki & Dave Shreiner*
 Martha Siebe
 Christine Siebenhaar
 Kai Simonsen
 Chester Simpson*
 Dr. Irene O. Simpson
 Tracey A. Simpson*
 Hannelore Singley*
 Lyn Sinko
 Tara & Frances Skeen*
 Ms. Frances B. Smith
 Janice & Lance Smith*
 Julie & David Smith
 Kristine Smith*
 Nicole Smith
 Yvette Smith*
 Marcia Smythe
 Laura Sneddon
 William Snel*
 Archie Soden*
 Magda Soley*
 Cheryl Solis
 Kevin Sorensen
 Robert Spagat &
 Toni Raif-Spagat
 Dianne & Bruce Spaulding
 Jill Specht
 Ellen & Mark Spence
 James E. Spencer*
 David & Donna Spilman
 Clark & Michele Spink*
 Gary Spratling*
 Craig & Jane Spriggs
 Heather D. Spurlin
 Alice Stauffer
 Sara Steelman
 Diane Steinberg
 Daniel & Lisa Stendig
 Linda & Donald Stephens*
 Nancy Stephens*
 Janice Stetler
 Todd Stevenot
 Aubrei Stimpfig
 Rebecca Burgess &
 Michael Stoddard*
 Rhom Stone*
 Jacob Stoner
 Christine Stott*
 Faith & Piers Straley*

Jane & Duane Stratton*
 Joyce M. Stripe*
 Susan Strong Davis*
 Robert Strouse*
 Jacqueline Suiitt
 Kathleen Sullivan
 Theresa Sullivan
 Lois P. Summers
 Susan Sunderland
 Barbara & Cyrus Sweet
 Patricia & Alan Tai
 Mary Takaichi
 Dorothy E. Tchelistcheff*
 Donald & Traci Terluin*
 Glenn Thomas & Kimberlyn
 J. Kleasen*
 Tamyra Thomas
 Nona & William Thomas*
 Susan Timm
 James & Andrea Tittle*
 Jenee Todd
 Dianne Tomita*
 Sally Tracy*
 Sabine Trammell
 Peter & Amy Traugot
 Kristin & Keith Travis*
 Doris Tucker
 Doris M. Tucker
 Elfriede A. Tucker
 Barbara & Donald
 Turnbull*
 Mary Turner*
 Lucinda & Jeffrey Twining
 Dean & Bertha Tyler
 Leslie R. Tyler & Lawrence
 J. Less*
 Jonathan Ungar
 Sloan & Priscilla Upton*
 Ann Ure
 Dora van Loggem*
 Jenifer Vandivier
 Clifford Vaughan, Jr.
 Karen Verrico
 Seeske D. Versluys, DVM*
 Susan & Tom Vervaeke
 Steven & Wendy Vest
 Georgette & Marc Victor*
 Karl W. Von Kries
 Jarmila Vrana & Jaroslava
 Prossr
 Rainer & Marianne
 Wachalovsky*
 Mr. Marshall L. Walden*
 Mark & Joyce Walker
 Irene & George Wallace*
 Debby Walter

Deborah & John Walter
 TJ Warfield
 Roxanne Warren*
 Nina & Brian Washburne*
 Patricia Watt*
 Meredith & Jeff Watts*
 Theresa Weaver*
 Tara & Robert Weingarten*
 Daniel H. Weinstein
 Ginny & Richard Welsh
 Mary & Peter Wendt*
 Carla Wenzel
 Susan Weston
 Jacqueline Whelan
 Helene & Alan White*
 Connie White
 Barbara Whittle*
 Deb Wickham
 Ronald H. Wideman*
 Charles W. Wieland
 Suzanne Wierbinski*
 Carolyn Wilcoxon
 Penny & Paul Wilkins*
 Stephen Williams
 Tyler Williams
 Clifford Willis
 Barbara H. Wilson
 Glen & Martha Wilson*
 Leilani & Iain Wilson
 Grace & Rowan Wilson
 Shannon Wilson & Janine
 Guillot
 Kathryn Winter*
 Kevin Wofsy
 Mr. & Mrs. Ralph Wolfe
 Julie Wong
 Josephine Wood*
 Catherine Woods*
 Jeanne Woods
 Barbara & John Woods*
 Jeffrey Woolford
 Lester & Joan Wortsman*
 L. A. Wurl*
 Deborah Wyatt*
 Dr. Ken Yates
 William E. Younis*
 Zee Zaballos
 David Zacarias
 Dan Zach & Danielle
 Goldman
 Barbara Zarembinski*
 Howard Zee*
 Lewis & Patricia Zuelow
 Koen & Marianne
 Zuijdgeest-Graaf
 Audrey Zwerle*

BEQUESTS

\$100,000

Estate Of Lloyd K.
 Longthorp
 The Emily V. Hughes Trust
 The Edward Drozynski, Jr.
 Trust
 Barbara M. Holbrook 2006
 Revocable Trust
 The Hanson 1993 Trust
 Patsy Lee McMurtrie 2001
 Trust

\$10,000 – \$99,999

Estate of Elaine Marie
 Christensen
 Estate of Elaine B Smith
 The Estate of Marilyn
 Rajkovich
 Emily H. Bour Trust
 Estate of Carolyn E. &
 Donald C. Meaney
 Robert D. Sprague 2001
 Recovable Trust
 Chester & Dorothy Brehm
 Trust
 Barbara J Walczak Trust
 The Vera Mona Crosby
 Trust
 Michael C. Wolford Trust
 Norris A. Hanson
 Residuary Trust
 Candyce Colvin Living Trust
 Vern Torongo 2006
 Revocable Trust

Up to \$9,999

Marian C. Stetson Trust
 Estate of Hanna Margrith
 Burgherr
 Estate of Richard
 Bachenheimer
 Estate of Mildred Lillis
 Estate of Dorothy M.
 Simpson
 The Wiegand Trust
 Nancy Faires Legler 2002
 Revocable Trust
 Estate of Spaulding A.
 Norris
 Richard F. Winckel
 Irrevocable Trust
 Patricia E. R. Eschen Trust
 The Gale Henning Trust

STELLER CIRCLE

Anonymous (3)
 Dale Alison Anania
 Helga Ashkenaze
 Mary Bachman & William
 Downing
 Diane Baldwin
 Doreen Baleria
 Juliana Barr
 Mary Barr
 Sheri & Robert Bell
 Cynthia Benner
 Florie & Joseph Berger
 Jeanne Bobbitt
 Lois L. Brewer
 Vi Brown
 Waltraud & Michael
 Buckland
 Richard & Christy Burke
 Lou Ella Burmeister
 Susan Burns
 Barbara Busch
 Susan Camusi
 Mariateresa Canosa
 Robert Caradien
 Maria E. Carrasco
 Joan Christenberry
 Charles Condy
 Gale Connolly
 Shelly Crain
 Sharon Culp
 Sue & Daniel Curran
 Grace Davis
 John De Crell
 Lee Desta
 Lyla A. DeVita
 Tim Dimacchia
 Elizabeth O. Dohrmann
 George & Laura Dora
 Margaret Downing
 Lyn Carol Dunn
 Constance Edwards
 Veronica Espada
 Frances Ezer
 Margaret Louise Falk
 Judy Feil
 Deborah Gabris
 Carol Gamble
 Andrew Geiser
 Liana Genovesi & Scott
 Ahrendt
 Derlin German
 Arlette & Nick Gerson
 Loretta M. Giorgi
 Lawrence Goldyn

Barbara Goodwin
 Gitta Grabowski
 Jean Grandfield
 Susan Gray
 Lynn Griffin
 Harry Haines
 Hildegard H. Harris
 George Harter
 Jacqueline & Eugene
 Haunch
 Virginia Hawley
 Therese Holland
 Sally Holt
 Michele & Bill Hunnewell
 Mary Huzar
 Jamie Jaffee
 Mary & Robert Jenkin
 Stan Jensen
 Anna-Kajs Johnson
 Ms. Mary Jope
 Pauline Kayes
 Lloyd Kendall
 Antoinette & Stephen
 Krajcar
 Ilona Kratz
 Ann Kugel
 Carmen M. Lasar
 Catherine & Collin Lau
 Sandra Legan
 Nancy Lenzer
 Douglas Levinson
 Ruth Levitan
 Charles Lindner
 Teri Loveland
 Jeanne Lucenti
 Carma Luskin
 Andre Malouf
 Greg Martin
 Jorie B. McCarthy
 Celeste McConnach
 Joseph McCrane
 Loraine Meyer
 Agnes M. Miller
 Patricia Minnick
 Sharon Neiman
 Gloria Nelson
 Joyce & Mohsen Noori
 Priscilla Palomino
 Jeanne Pauley
 Rita Peters
 Jayne Phelps
 Donald E. Pringle
 Kevin Rabe
 Robert & Vicki Rawlings
 Bonnie & Laurence Rhodes
 Steven Russ

Ruth Schlossberg
 James Schollard
 Susan Shapiro
 Linda & Joe Stockhus
 Eric Strand
 Scott & Patricia Teaford
 Deborah Tencza
 Barbara & Donald Tornberg
 Kate & Richard Vance
 Jackson Vandebross
 Linda Vetter
 Shirley & Herman Victor
 Lee & Bill Webber
 Donald West
 Jan Widdowson
 Stephanie & Kim Wigton
 Jane Williamson
 Bob Wilson
 Barbara Woodhill

MEMORIAL GIFTS

We respectfully recognize special gifts received in memory of these family members & friends:

Madeline Adrian
 Gary Allums
 Sybil Alznauer
 Gladys Buonaccorsi
 Annetta Burden
 Buzz Carlson
 Grace Christiansen Ricci
 Stewart Clark
 Michael Coffman
 Jack Craemer
 Victor & Lura DeStefanis
 Winnie Doran
 Stephen R. Dows
 Janet Grove
 George Gee
 Jessica Holmes
 Martha Hoppe
 Bob MacCarthy
 Rosalee Metzger
 Daniel Mezzacapo
 Ruth Nichols
 Rocci Pisano
 Marilyn Rajkovich
 Charles R. Rambo
 Julie Rich
 Ed Ricketts
 Leanne B. Roberts
 Robert Rutz
 Marie Salmina
 Timothy Shea

* **Five years or more consecutive giving** If you recognize an error or omission in this listing, please accept our sincerest apologies and feel welcome to contact Development & Administrative Coordinator Marissa Kalashian at 415.289.7335 or dev@tmmc.org.

Cindy Silvera
Steven Sneddon
Krista Frances Walker
"Polo"

TRIBUTE GIFTS

We gratefully recognize special gifts received in honor of these family members & friends:

Nate Baluda
Barbara Beasley
Skylar Beckett
Elizabeth Beggs
Mr. & Mrs. David Berry
Jeff Boehm
Marjorie Boor
Alden Brewin
Lolly & John Burke
Cec & Nick Camera
Claire Castrejon
Graham Charles
Jeffrey Charron
The Children of Assurance
UMC
Leslie Comstock
Elena Cox
Joseph Cozza
Lori & Bruce Dorman
Sam Ehrman
Ned Engle
Kendra Ferguson
Karen Gaffney
Dario & Leo Gingrich
Steven & Florence Goldby
Bill & Susie Groechel
Groom Family
Doug Heneke
Lydia Hall
Tracy Harcourt & Ed Chejlava
Ryan Harrison
Meagan Hawkes
Sylvie & Wendy Heffner
Donnamae Huberman
Hannah Hughes
Adam Husted & Joe Alfano
Bob Jackman
Denise & Jeff Jenkins
Isabella Johnson
Doreen Judson
Janet Juve
Isaiah Katz
Thomas Kemp
Jane Khudyakov
Suzy Kisch

Elise Kroeber
Art & Joan Latno
Rob, Dawn, Sam & Rachel
Leavitt
Ben Lefkowitz
Margareta Luff
Meri Mace
Karen Madsen
Greg Mauldin
Tom McKewan & Karen
Johnson McKewan

June Moroney
Tara Mueller
Alex Nichols
Matthew Noel
Bonnie Palmer
Aidan Payne-Kraus
Tami Pearson
Suzanne Peck
Phillips Family
Gordon Poett
George & Chris Pruitt
Bonnie Ricca
Hannah Ruben
Linda Sanguinetti
Steven Sneddon
Kirsty Star
Dieter & Merrilee
Wasshausen
Paul Wythes
Zee Zaballos
"Northern fur seals"
"Jetty"
"Uphill"

CORPORATIONS, FOUNDATIONS AND ORGANIZATIONS

\$100,000+

Margaret A. Cargill
Foundation
Dawn
DMARLOU Foundation
William Randolph Hearst
Foundation
Marin Community
Foundation
Silicon Valley Community
Foundation

\$50,000 – \$99,999

Fiduciary Trust
International of
California
City of San Bruno

Jewish Community
Endowment Fund
NOAA National Marine
Fisheries Service
NOAA Prescott Grant
Program
PIER 39 Limited
Partnership

\$25,000 – \$49,999

Foren Family Foundation
Bank of America
Helen Brach Foundation
George Frederick Jewett
Foundation
Hewlett-Packard Company
Charles Lamar Family
Foundation
Oracle Corporate Giving
Programs
Pacific Gas & Electric
Company
The Sato Foundation
Wells Fargo Foundation
Wilmington Trust Company

\$10,000 – \$24,999

The Robert S. & Grayce B.
Kerr Foundation, Inc.
The Atmos Foundation
The Callison Foundation
Thelma Doelger Charitable
Trust
Donate for Charity Inc.
Dynergy, Inc
Eric Roberts Foundation
Fidelity Charitable Gift
Fund
The Ginn Family
Foundation
The Heritage Company
Merrill Lynch
The Bernard Osher
Foundation
Quadra Foundation
Raymond James Charitable
Endowment Fund
The Robison Family
Foundation
The San Francisco
Foundation
Schwab Charitable Fund
Michael C. Wolford Trust

\$5,000 – \$9,999

Acologix
The Ardea Fund

Autodesk, Inc.
Cinco Hermanos Fund
Community Thrift Store
Double Forte
Fidelity Brokerage Services
LLC
The Edward E. Hills Fund
The Edith & Herbert
Lehman Foundation,
Inc.
Marin Sanitary Service
Method
Morgan Stanley Smith
Barney Global Impact
Funding Trust, Inc
The Kingsley H. Murphy
Family Foundation
Pacific Life Foundation
The Biz & Livia Stone
Foundation
Sunshine Polka-Dot
Foundation
Union Bank of California
Foundation

\$2,500 – \$4,999

A & B Foundation
The Bothin Foundation
Community Foundation
Sonoma County
Cynthia & Merrill Magowan
Family Foundation
The Greater Cincinnati
Foundation
The Gamble Foundation
The Good Night Foundation
The Jammy Heal
Foundation
The Kimball Foundation
Lasky Charitable Lead
Trust
McCormick & Kuleto's
The Overbrook Foundation
PG&E Corporation
Campaign for the
Community
Shirley Ann Spencer Fund
for The Marine Mammal
Center
Sidney E. Frank Foundation
The U.S. Charitable Gift
Trust
Vanguard Charitable
Endowment Program
Walter & Elise Haas Fund

\$500 – \$2,499

Arch Insurance Group, Inc.
Aveda Corporation
Bank of Marin
The Bank of New York
Mellon
Baybenefits
Bishop Pine Fund
The Black Dog Private
Foundation Inc.
Charles Schwab & Co., Inc.
Dayton Foundation
Dibble & Dibble
The E.D. Foundation
Simon Edison Foundation,
Inc.
Entertainment Industry
Foundation
Gideon Hausner Jewish
Day School
Guarantee Mailing
Services, LLC
The Herbst Foundation,
Inc.
Horizons Foundation
Horizons Restaurant
The James Irvine
Foundation
The Jones-Smith
Foundation
K&G Architects
William & Gretchen Kimball
Fund
The Louis R. Lurie
Foundation
Machiah Foundation of
the Jewish Community
Endowment Fund
McKesson Foundation, Inc.
The Mermaids Incognito
MissionFish
Dr. Earl H. Myers & Ethel
M. Myers Trust
Nasaw Family Foundation
Networkforgood.org
NewDealDesign, LLC
Northern California
Paddlesports
Pasadena Community
Foundation
Random House
Charles See Foundation
John G. Shedd Aquarium
The Thornhill Family
Foundation
The Traverse Foundation

Truettner Foundation
Wholesale Connection
Insurance Services, LLC
Ronald C. Wornick Jewish
School
American Endowment
Foundation
The Barnston-Koutsafis
Foundation
Dandelion Foundation
The Diffenbaugh
Foundation
Evim Foundation
Farese Family Foundation
Independent Charities of
America
Kate's Blossoms
MPMM
Pinnacle Gardens
Foundation
Pismo Coast Association of
Realtors, Inc
Sara Lee Foundation
Savva Symposium 2011
Simco Restaurants, Inc
The TOSA Foundation
The Community Foundation
for Monterey County
Youngcare Child
Development Center, Inc

CORPORATE MATCHING GIFTS FOR EMPLOYEE VOLUNTEER HOURS

A & B Foundation for Lynne
Murrell
Bank of America Matching
Gifts Program for
Richard Ferris
Entertainment Industry
Foundation for Justin
Ritter
Global Impact—Symantec
for Jeffrey Gray
McKesson Foundation, Inc.
for Barbara Beasley
Sara Lee Foundation for
Kathy Newton

MATCHING GIFT AND WORKPLACE GIVING ORGANIZATIONS

A & B Foundation
Abbott Laboratories
(Abbott Fund)

Adobe Matching Gift
Program
AIG Matching Grants
Program
Allstate Giving Campaign
Altria Group, Inc.
AMD Matching Gift
Program
American Express
Company Employee
Giving
Amgen Foundation
AT&T United Way Employee
Giving Campaign
AXA Foundation
Bank of America Matching
Gifts Program
Bank of America United
Way Campaign
Bank of The West
The Boeing Company
Chevron Humankind
Employee Funds
City of Seattle
The Clorox Company
Foundation
CNA Foundation
Dell Employee Giving
Program
DFS Group Limited
DirectTV
eBay Foundation
Environmental Federation
of California
The Gap Foundation
Gap Inc. Giving/Matching
Campaign
GEICO
Genentech Givingstation
GlaxoSmithKline
Foundation
Global Impact—Applied
Materials
Global Impact—Symantec
Google
Hewlett Packard
Foundation
IBM Matching Grants
Program
Indiana State Employees
Community Campaign
Intuit Foundation—
Matching Gift Program
Johnson & Johnson
Matching Gifts Program
The JP Morgan Chase & Co

* **Five years or more consecutive giving** If you recognize an error or omission in this listing, please accept our sincerest apologies and feel welcome to contact Development & Administrative Coordinator Marissa Kalashian at 415.289.7335 or dev@tmmc.org.

Kaiser Permanente
Community Giving
Campaign
KPMG
Lawrence Livermore Lab, UC
Levi Strauss Foundation
Local Independent
Charities of America
Macy's West GIFT
Microsoft Giving Campaign
Program
Morgan Stanley
Motorola Foundation
National Semiconductor
Oracle Corporation Matching
Gifts
Pfizer Foundation
PG&E Corporation
Campaign for the
Community
The Prudential Foundation
RBC Foundation
Salesforce.com
Foundation
SAP Matching Gifts
Program
Synopsis Foundation
Tellabs Grants for Giving
Program
Truist
Tyco Matching Gifts
Program
Union Bank of California
Foundation
United Airlines
United Technologies Corp.
United Way California
Capital Region
United Way of Sonoma
Mendocino Lake
United Way of the Bay Area
United Way, Inc.
UnitedHealth Group
Verizon Foundation
Wells Fargo Community
Support Campaign
Yahoo! Employee
Foundation

**DONATIONS OF
IN-KIND PRODUCTS
AND SERVICES**

Value of \$50,000+

Double Forte
Pier 39 Limited
Partnership

San Francisco Magazine
SWIRL

**Value of \$10,000 –
\$49,999**

7x7 Magazine
ABC 7
KFOG
Martin John Osborn
Beth & Kevin Sullivan
The Wall Street Journal

**Value of \$1,000 –
\$9,999**

Aviously Delicious Catering
Bay Nature Magazine
CamelBak
Campus Surgery Center
Casa Madrona Hotel & Spa
Cavallo Point, The Lodge at
the Golden Gate
The ChicoBag Company
Cold Stone Creamery
Econscious
Ferry Building Marketplace
Foster Mobley Group
Hayward Flow Control
Systems
Hess Collection Winery
Kate's Blossoms
Marshall Arts
Rustic Bakery
Small Shed Flatbreads
Stanford University,
Comparitive Medicine
Truth Be Told Creative
Whole Foods Market, Mill
Valley
Whole Foods Market, San
Rafael
XenoPort, Inc.
Jim & Tanya Beede
Elizabeth Cunningham &
Charles Costello
Susan Grau
Carol Stevenson
Faye & Sandor Straus—
Firedoll Foundation
Katherine & Phil Reilly
Bob Woodrum
Mary Worl

Value of up to \$999

Barlovento Chocolates
Best Buy, Marin City
Big 4 Party Rentals
CamelBak Products, LLC

Can Do Kid Inc.
Cibo
Costco, Novato
Crystal Geyser
Dogville
EOS Ensemble
Caroline Lee
Thalia Moore
Craig Reiss
Asuka Annie Yano
Fog City Dogs
Frantoio
Honest Tea
Kitti's Place
Larkspur Hotel Mill Valley
Marin Independent Journal
Marin Jeweler's Guild
Sarah Suloff
Method
Mike's Bikes
Noah's Bagels
Odwalla, Inc.
Patagonia, San Francisco
PF Chang's, Corte Madera
Planet Granite, San
Francisco
REI Corte Madera
Rustic Bakery
Safeway Mill Valley
Safeway Strawberry Village
Saint Benoit Yogurt
Saylor's Restaurant & Bar
Spinnaker Restaurant
Sports Basement
Starbucks Coffee
Tarantino's Restaurant
TCHO
TerraCycle, Inc
Three Twins Ice Cream
Tom & Dave's Specialty
Coffee
Trader Joe's
Woodlands Pet Food &
Treats
Tony & Carol Anello
Anonymous
Dana Bialashewski &
Stacy Bezyack
Keith Butler
Rich Crumley
Marie DeStefanis
Peter DiDomenico
Monica DuClaud
Deborah Gabris
Doug Hailey
Bob Harchut

Rebecca Jackrel
Ronald & Joyce Kardon
Michael Kleeman
Richard Lang & Judith
Selby
Mary P. Maurer
Rose & Eleanor Mayer
Christine L. McEnery
Tim McGregor
Dean & Joanne Muench
Bert Rangel
Linda Roshon-Harville
Doug Ross
Stephen A. Schneider
Christine Shields
Amy Stone & Chris Stone
Misuzu Toyama
Philip & Jean Warren
Shona Weir
Dallas Willard

2011 GALA SPONSORS

Humpback Whale

Hewlett-Packard Company

Steller Sea Lion

Dynegy, Inc.
Faye & Sandor Straus—
Firedoll Foundation

California Sea Lion

Bank of America
Julie & Martin Richards
The Heritage Company

Harbor Seal

Double Forte
Lee Caraher
Ferry Building Marketplace
Betty & William Hasler
Elaine Genevro
Karen Johnson-McKewan
& Tom McKewan
Catherine Kruttschnitt
Cinnie & Merrill Magowan
Cecily Majerus
Glen Mathison & Zoel
Fages
Sunny & Mark McKee
Truth Be Told Creative
Union Bank
Beth Inadomi & Tim Newell
Wells Fargo
Pat Callahan

Northern Elephant Seal

PG&E
Carol & John Simon

Northern Fur Seal

A & B Foundation
Baybenefits
Dibble & Dibble
K&G Architects
Paula LeDuc Fine Catering
Run100s.com
Stan Jensen
Chris Stone
Jane & Dean Woodman

**2011 GALA FUND-A-
NEED DONORS**

Elizabeth Avakian
Joyce & Tom Bauer
Jeff Boehm & Keith
Rosenthal
Peggy Bruggman
Pat Callahan
Chad Carlson & Ed
Westerman
Ron Conway
Kenneth A. Coren
Mario Diaz
Susan Freiwald
Elaine Genevro
Val & Jerry Gibbons
Jon Haber
Leah Haber
Jane A. Hansen & Ed
Fowler
Lynne Hermle & Craig
Collins
Beth Inadomi & Tim Newell
Andy Keller
Michael Kleeman
Gail Koza & Paul Meskell
Linda M. Koza
Catherine Kruttschnitt
Joanne L. Lasnier
Denise & Chris Lundquist
Jim MacDonald
Robert T. Mack &
Bernadette J. Reiss
Douglas & Michele
Magowan
Cinnie & Merrill Magowan
Joel Makower
Belinda & David Martinez
Ramona & John Mays
Sunny & Mark McKee

Nooshy Mobasher
Wendy & Greg Murphy
Sue Muzzin
Soo Park
Kathy & Jim Paver
Kim Polese
Julie & Martin Richards
Keith & Jenny Richardson
Stephanie Rico
Jenny Risk
Rachel Rosenblum
Patricia & Glenn
Rudebusch
Ingrid & Eric Ryan
Suki Shepard
Jill Spicer
Roberta Steiner
Biz & Livia Stone
Faye & Sandor Straus
Rob & Karen Wamstad
Philip & Jean Warren
Deb Wickham

**2011 RUN FOR THE
SEALS CORPORATE
SPONSORS**

Gold

ABC7
Aquarium of the Bay
Autodesk
Bank of America
KFOG
Silver
Aveda
Cavallo Point, The Lodge at
the Golden Gate
Marin Independent Journal

Bronze

Odwalla, Inc.
Pier 39 Limited
Partnership
Union Bank
Whole Foods

**INTENSIVE CARE &
QUARANTINE UNIT
CAPITAL CAMPAIGN**

*The Marine Mammal
Center gratefully
acknowledges the
following donors for
their contributions to the
Center's Intensive Care &*

*Quarantine Unit made in
the 2011 calendar year.
Thanks to their support,
the Center is closer
to fully completing its
marine mammal hospital
& increasing patient
capacity.*

\$100,000+

William Randolph Hearst
Foundation
Sausalito-Marin City
Sanitary District

\$50,000 – \$99,999

Anonymous
City of San Bruno
Mr. & Mrs. Harold M.
Williams

\$10,000 – \$49,999

Ms. Pat R. Callahan & Mr.
David Dee
Mrs. Susan Grau
Ms. Betty White Ludden

\$1,000 – \$9,999

Mr. & Mrs. William Hasler
Mr. Glen Mathison & Mr.
Zoel Fages
Mr. & Mrs. Philip Warren

Up to \$999

Verity & Ross Burgess
Marie DeStefanis
Ms. Sherry E. Dunning-Riley
Ms. Carol A. Gamble
Val Guarin
Courtney J. Lamar
Ms. June Moroney
Pam & Bill Sagan
Lucinda Thames
Dr. & Mrs. Brian Wilson

* **Five years or more consecutive giving** If you recognize an error or omission in this listing, please accept our sincerest apologies and feel welcome to contact Development & Administrative Coordinator Marissa Kalashian at 415.289.7335 or dev@tmcc.org.

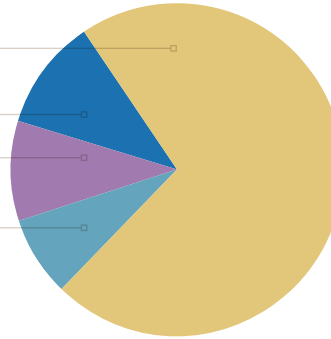
Financial Summary

Statement of Activities

For the Year Ended September 30, 2011

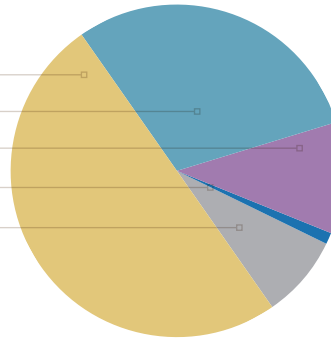
Operating Support and Revenue

| | | |
|---|--------------------|-------------|
| Contributions from foundations, corporations, members and individuals | \$5,517,847 | 74% |
| Education program fees and retail revenue | \$798,260 | 11% |
| Federal, state and local government support | \$708,855 | 10% |
| Donated materials and services | \$598,000 | 8% |
| Other revenue (loss) ⁽¹⁾ | (\$220,887) | -3% |
| Total Operating Support and Revenue | \$7,402,075 | 100% |



Program & Operating Expenses

| | | |
|--|--------------------|-------------|
| Veterinary science programs | \$3,787,528 | 50% |
| Educational programs | \$2,253,017 | 30% |
| Fundraising—operations | \$831,844 | 11% |
| Fundraising—capital campaigns | \$95,143 | 1% |
| Supporting services | \$580,920 | 8% |
| Total Program & Operating Expenses ⁽²⁾ | \$7,548,452 | 100% |
| Change in Net Assets | (\$146,377) | |



Statement of Financial Position

As of September 30, 2011

Assets

| | |
|-------------------------------|---------------------|
| Cash and cash equivalents | \$1,690,484 |
| Contributions receivable | \$1,375,992 |
| Investments at market | \$1,357,677 |
| Inventories | \$140,363 |
| Equipment and structures | \$28,356,867 |
| Deposits and prepaid expenses | \$177,367 |
| Total Assets | \$33,098,750 |

Liabilities

| | |
|--|--------------------|
| Accounts payable and accrued liabilities | \$670,462 |
| Notes payable | \$2,100,000 |
| Total Liabilities | \$2,770,462 |

Net Assets

| | |
|-------------------------|---------------------|
| Unrestricted | \$28,602,279 |
| Temporarily restricted | \$1,114,018 |
| Permanently restricted | \$611,991 |
| Total Net Assets | \$30,328,288 |

Total Liabilities and Net Assets \$33,098,750

⁽¹⁾ Other revenue (loss) includes an impairment loss on land held for sale, which was donated to the Center in 2009.

⁽²⁾ Total Expenditures include \$1,243,718 of depreciation, primarily from the new Sausalito facility.



The Marine
Mammal Center.

Board

Pat Callahan

Senior Executive Vice President,
Chief Administrative Officer
Wells Fargo Bank

Lee Caraher

President and CEO
Double Forte

Chad Carlson

Senior Director, Global Advertising
NAS Online Demand Generation &
Global Agency Management
Oracle Corporation

Richard Cassam

Trustee
Del Monte Forest Property Owner's
Association

Elaine Genevro

Senior Vice President, Market
President
Union Bank

Susan Grau

Civic Leader

Betty Hasler

BOARD SECRETARY
Managing Director
Diversified Search

Beth Inadomi

Principal
The Podesta Group

Karen Johnson-McKewan

BOARD CHAIR
Managing Partner
Orrick, Herrington & Sutcliffe LLP

Michael Kleeman

Entrepreneur/Lecturer
UC San Diego

Catherine Kruttschnitt

Civic Leader

Merrill L. Magowan

Co-Founder
San Francisco Sentry Investment
Group

Cecily Majerus

Civic Leader

Glen Mathison

Vice President, Employee
Communications
Charles Schwab & Company, Inc.

Mark McKee

BOARD VICE CHAIR
President
Capital Alternatives

Martin Richards

Enterprise Client Coverage Executive
Bank of America Merrill Lynch

Linda Curtis

Volunteer Council Representative

John Simon

Senior Vice President Human
Resources
PG&E

Sandor Straus

BOARD TREASURER
Managing Director
Merfin, LLC

Phil Warren

Civic Leader

Directors Emeriti

Mary Bachman
Nancy Colvert
Dennis DeDomenico
Jerry Gibbons
Rev. Douglas Huneke
Joseph Rogers
Peter Stauffer
Beverly Tanner
Robert Wilson
Sheldon Wolfe

Executive Director Emeritus

Peigin Barrett

Executive Director

Jeff Boehm

Scientific Advisors

Sarah Allen, Ph.D.

National Park Service, Point Reyes
National Seashore

James Harvey, Ph.D.

Moss Landing Marine Laboratories

Dave Jessup, BS, DVM, MPVM, DiplACZM

Marine Wildlife Veterinary Care
and Research Center, California
Department of Fish and Game

Linda Lowenstine, DVM, Ph.D., ACVP

Department of Veterinary Pathology,
Microbiology & Immunology,
University of California, Davis

Hal Markowitz, Ph.D.

Department of Biology, San
Francisco State University

Jim McBain, DVM

Veterinary Office, Sea World of
California

Tom Williams, DVM

Monterey Bay Aquarium

2000 Bunker Road
Fort Cronkhite
Sausalito, CA 94965-2619
T 415.289.7325 (SEAL)
F 415.289.7333
MarineMammalCenter.org

Monterey Bay

PO Box 778,
Moss Landing, CA 95039
T 831.633.6298
F 831.633.5927

San Luis Obispo

1385 Main St.,
Morro Bay, CA 93442
T 805.771.8300
F 805.771.8304

Anchor Bay-Fort Bragg

T 415.289.7325 (SEAL)



The Marine Mammal Center is a
proud partner of the Golden Gate
National Parks

Our park partners: [nps.gov/goga/
marin-headlands.htm](http://nps.gov/goga/marin-headlands.htm)